

Ofisutemam
Oficinas Suelos Techos Mamparas



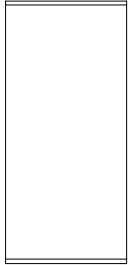
MAARS INTERIOR SYSTEMS

Newtonweg 1, 3846 BJ Harderwijk, Netherlands

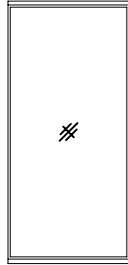
P.O. Box 1000, 3840 BA Harderwijk, Netherlands

Telephone +31(0)341 465211, Fax +31(0)341 414024

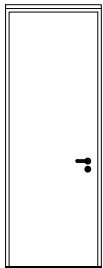
E-Mail info@maars.nl, Internet www.maarsgroup.com



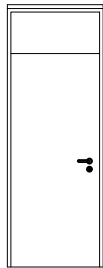
A101



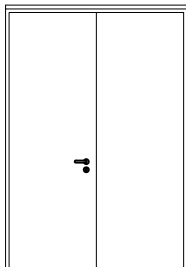
A102



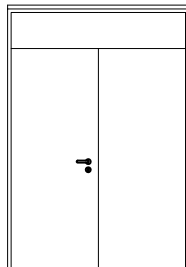
F101



F201



G101



G102



Partition construction
Wandaufbau
Composition des cloisons
Wandopbouw
Construcción de la mampara

String

This wallsystem is characterized by an inconspicuous joint between the different elements, in both the horizontal and vertical direction. The solid elements consist of melamine chipboard. Double glazing is mounted in slimline profiles. Doorframes are available with square, round or elliptical profiles. Finish can be smooth (20% gloss) or soft touch (structured low gloss) powder coating.

Wallthickness is 82 mm
Modulewidths are up to 1200 mm.
Elevationheight max.3250 mm.
Soundinsulation up to Rw45 dB.
Fireresistance solid elements to 30 min.

String

Dieses Wandsystem zeichnet sich durch eine unauffällige Haarfuge aus. Die Paneelen bestehen aus melamine Spanplatte. Fensterelemente sind doppelt verglast mit schmalen Rahmenprofilen. Türelemente mit wahlweise eckigem, rundem oder ellipsenförmigem Zargenprofil. Oberflächenbehandlung pulverbeschichtet, glatt oder leicht strukturiert.

Wandstärke 82 mm.
Modulbreite bis 1200 mm
Wandhöhe bei Vollelementen max. 3250 mm.
Schallschutz bis 45dB Rw.
Feuerwiderstand geschlossen Wand 30 min.

String

La cloison String se caractérise par un joint filaire entre les différents éléments, tant horizontalement que verticalement. Les modules pleins sont constitués de panneaux d'acier laqué renforcés d'une plaque de plâtre en sous-face. Les châssis vitrés double vitrage utilisent un profil monce. Les huisseries seront à section droite, ronde ou elliptique. La finition de laquage par poudre électrostatique et cuisson au four peut-être mate (20% de brillance) ou légèrement structurée.

Epaisseur 82 mm.
Largeur de module max. 1200 mm
Hauteur des cloisons max. 3250 mm
Acoustique Rw 45dB.
Résistance au feu d'un cloison pleine 30 min.

String

Dit wandsysteem kenmerkt zich door een onopvallende haarvoeg tussen de verschillende elementen, zowel horizontaal als verticaal. De beplating bestaat uit gemelamineerde spaanplaten. Dubbele beglazing is gevat in slanke kaders. Deurkozijnen in 3 uitvoeringen, recht, rond en ellips. De afwerking bestaat uit een zijdeglans of licht-gestructureerde poedercoating.

Wanddikte 82 mm.
Elementbreedte tot 1200 mm.
Wandhoogte tot 3250mm.
Geluidsisolatie tot Rw 45 dB.
Brandwerendheid gesloten wand 30 min.



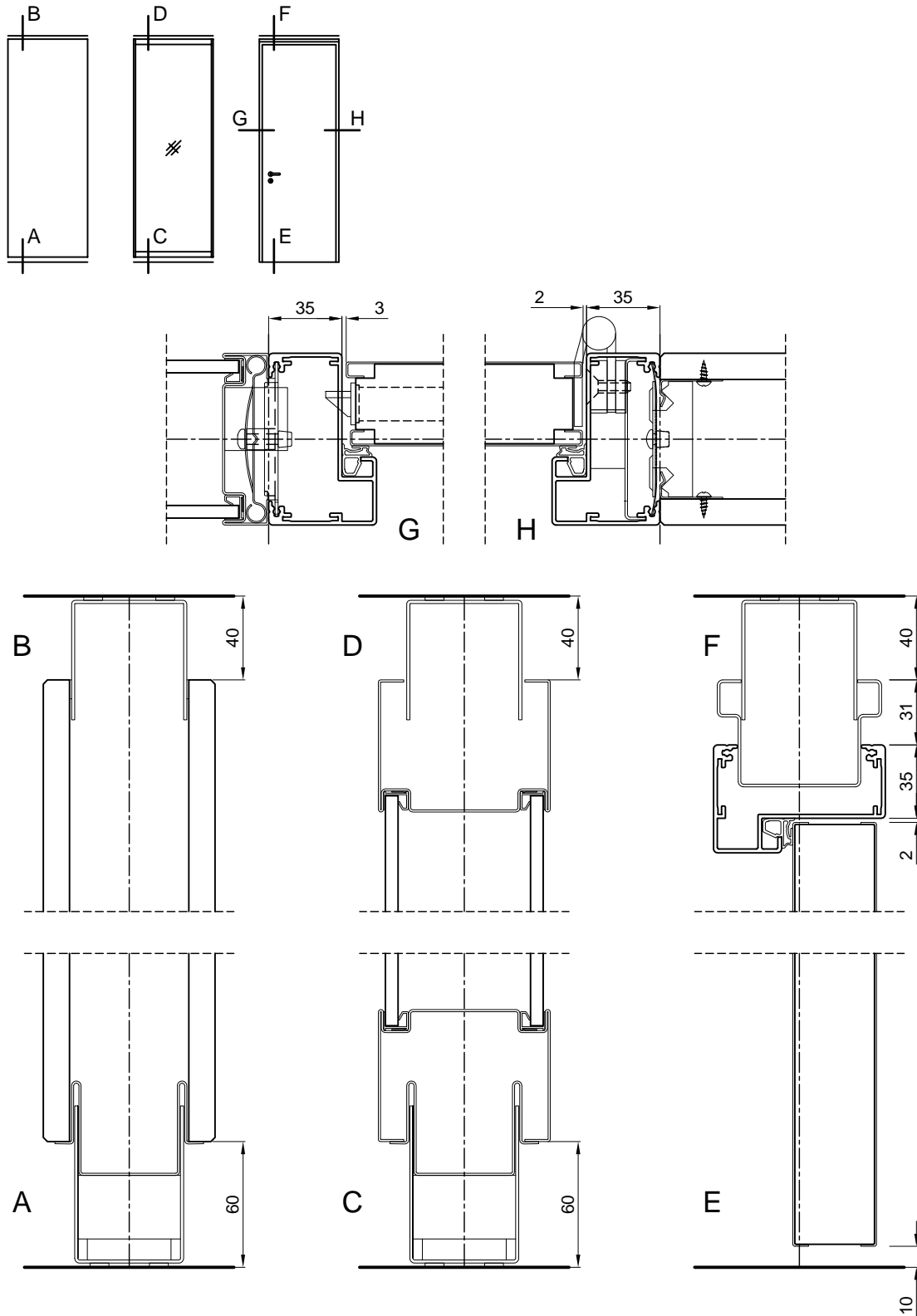
design the way you think

01-12-2007 - version 1

1-1-02

www.maarsgroup.com
Maars Partitioning Systems BV

Dimensions
Abmessungen
Dimensions
Maatvoering
Dimensiones



design the way you think

01-12-2007 - version 1

1-1-03

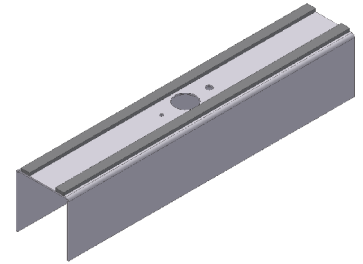
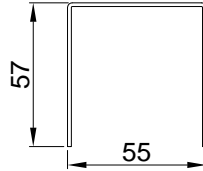
www.maarsgroup.com
Maars Partitioning Systems BV

Material list
 Materialliste
 Liste des composants
 Materiaalstaat
 Lista material

3101

Ceiling track
 Deckenprofil
 Lisse haute
 Bovenplint
 Rodatecho

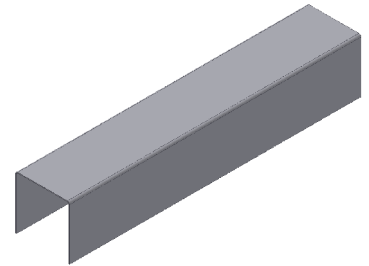
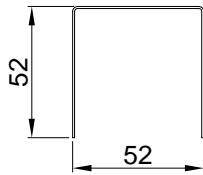
VO 56 002



3103

Ceiling track U-connector
 U-längsverbinder
 Raccord de lisse haute
 U-lengteverbinder bovenplint
 Empalme rodatcho

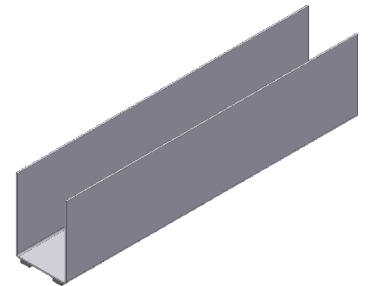
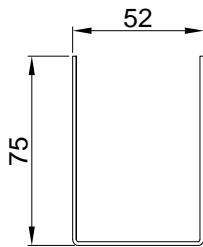
51 50 180



3104

Floor track
 Sockelprofil
 Lisse basse
 Onderplint
 Rodapie

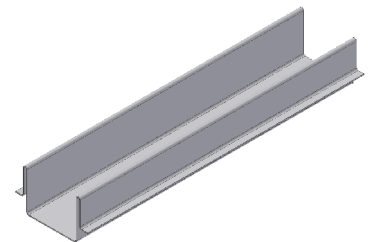
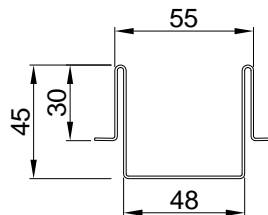
VO 56 002



3105

Support track
 Stellprofil
 Profil de réglage
 Stelplint
 Perfil de nivelación

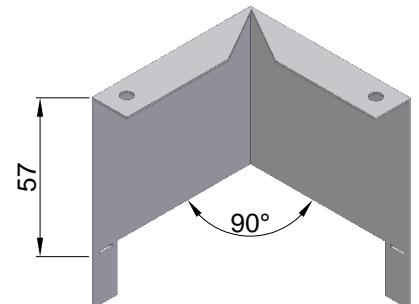
51 50 111



3108

Track cornercover 90°, ceilingtrack
 Eckstück 90°, Deckenprofil
 Angle extérieur de lisse haute 90°
 Bovenplint hoekkap 90°
 Remate rodatcho esquina 90°

VO 56 020



design the way you think

01-12-2007 - version 1

2-1-01

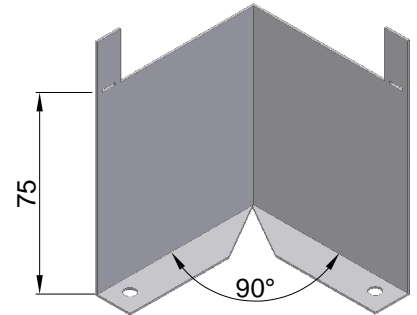
www.maarsgroup.com
 Maars Partitioning Systems BV

Material list
 Materialliste
 Liste des composants
 Materiaalstaat
 Lista material

3109

Track cornercover 90°, floortrack
 Eckstück 90°, Bodenprofil
 Angle extérieur de lisse basse 90°
 Onderplint hoekkap 90°
 Remate rodapie esquina 90°

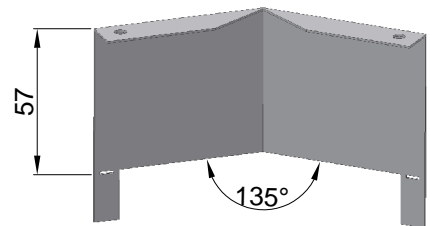
VO 56 020



3110

Track cornercover 135°, ceilingtrack
 Eckstück 135°, Deckenprofil
 Angle extérieur de lisse haute 135°
 Bovenplint hoekkap 135°
 Remate rodatecho esquina 135°

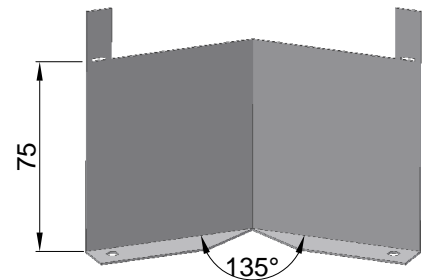
VO 56 020



3111

Track cornercover 135°, floortrack
 Eckstück 135°, Bodenprofil
 Angle extérieur de lisse basse 135°
 Onderplint hoekkap 135°
 Remate rodapie esquina 135°

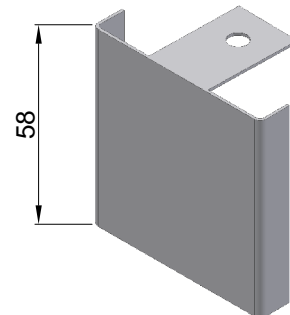
VO 56 020



3112

Endcover for ceilingtrack
 Endkappe Deckenprofil
 Embout de lisse haute
 Eindkap bovenplint
 Remate rodatecho final

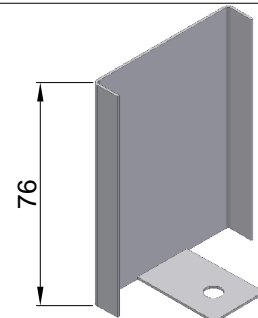
VO 56 020



3113

Endcover for floortrack
 Endkappe Sockelprofil
 Embout de lisse basse
 Eindkap onderplint
 Remate rodapie final

VO 56 020



design the way you think

01-12-2007 - version 1

2-1-02

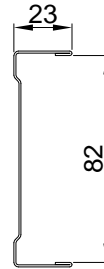
www.maarsgroup.com
 Maars Partitioning Systems BV

Material list
 Materialliste
 Liste des composants
 Materiaalstaat
 Lista material

3114

Wrap around walltrack
 Umfassender Maueranschluss
 Départ mur
 Wandaansluiting omvattend
 Estandar

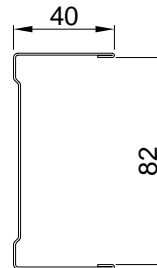
VO 56 005



3116

Wrap around walltrack
 Umfassender Maueranschluss
 Départ mur
 Wandaansluiting omvattend
 Estandar

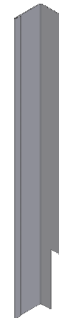
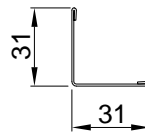
VO 56 005



3117

Half wall track
 Winkelprofil
 Cornière
 Wandaansluiting omvattend hoeklijn
 Angulo

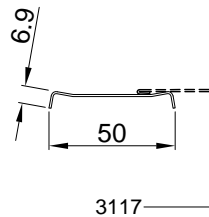
VO 51 500



3119

Clamp section
 Klemmprofil
 Profil de serrage
 Klemprofil
 Perfill de fijación

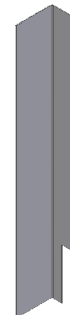
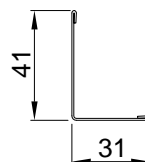
51 50 205



3120

Half wall track 31x41 mm
 Winkelprofil 31x41 mm
 Cornière 31x41 mm
 Wandaansluiting omv.hoeklijn 31x41 mm
 Angulo 31x41 mm

VO 51 500



design the way you think

01-12-2007 - version 1

2-1-03

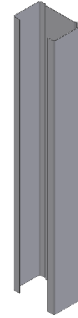
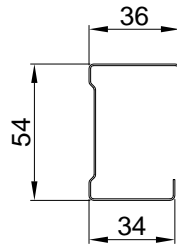
www.maarsgroup.com
 Maars Partitioning Systems BV

Material list
 Materialliste
 Liste des composants
 Materiaalstaat
 Lista material

3124

Stud without perforation
 Pfosten ohne Perforation
 Montant non perforé
 Stijl zonder perforatie
 Pie de arranque (tabique)

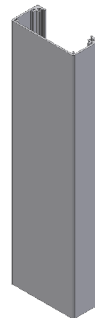
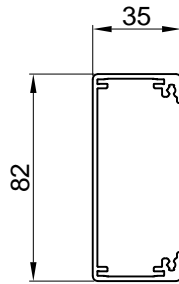
52 00 034



3126

End post, square
 Abschlussprofil, eckig
 Embout de cloison, carrée
 Eindprofiel, recht
 Perfil de remate

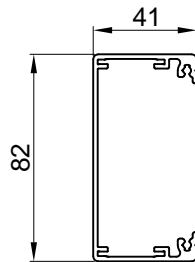
VO 56 004



3127

End post, square
 Abschlussprofil, eckig
 Embout de cloison, carrée
 Eindprofiel, recht
 Perfil de remate

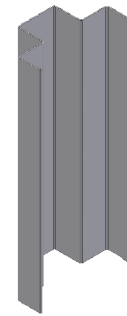
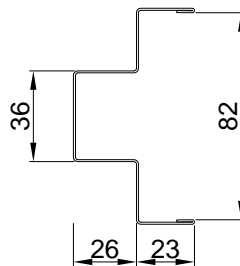
VO 56 004



3129

Recessed walltrack
 Maueranschluss mit Schattenfuge
 Départ mur en retrait
 Wandaansluiting omvattend verjongd
 Perfil de arranque retranqueado

VO 56 005



3130

Walltrack 22 mm
 T-anschluss 22 mm
 Liaison-T 22 mm
 Wandaansluiting 22 mm
 Perfil de arranque modulación 22 mm

VO 56 003



design the way you think

01-12-2007 - version 1

2-1-04

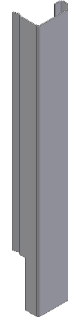
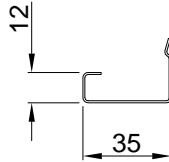
www.maarsgroup.com
 Maars Partitioning Systems BV

Material list
Materialliste
Liste des composants
Materiaalstaat
Lista material

3143

End post half for U-profile 58 mm
Endprofil halb für U-profil 58 mm
Embout de cloison demi pour U-profil 58 mm
Eindprofiel half tbv U-profiel 58 mm
Perfil medio de remate para un perfil U 58 mm

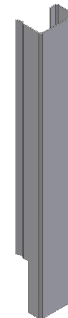
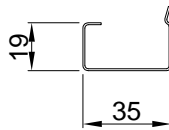
VO 56 012



3144

End post half for U-profile 44 mm
Endprofil halb für U-profil 44 mm
Embout de cloison demi pour U-profil 44 mm
Eindprofiel half tbv U-profiel 44 mm
Perfil medio de remate para un perfil U 44 mm

VO 56 012



design the way you think

01-12-2007 - version 1

2-1-05

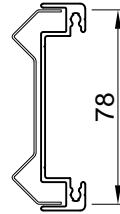
www.maarsgroup.com
Maars Partitioning Systems BV

Corner profiles
Eck Profile
Profil d'angle
Hoekprofielen
Perfil d'esquinas

3207

Adjustable cornersection (incl.glassel.profile)
Variabler Wandanschlussprofil (mit Glasel.profil)
Départ d'angle variable (avec profil châssis vitre)
aansluitprofiel variabele hoek (incl.raamprof.)
Perfil de conexión de modulación

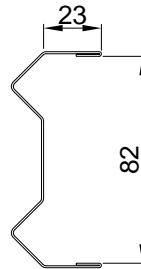
VO 56 008



3218

Adjustable cornersection / wrap 90°
Variabler Wandanschlusspr. / umfassend 90°
Départ d'angle variable / encastre 90°
Aansluitpr.variabele hoek / omvattend 90°
Perfil de conexión de arranque 90°

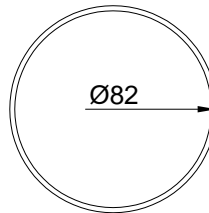
VO 56 008



1204

Adjustable corner
Variabler Wandanschluss
Poteau d'angle variable
Variabele hoek
Angulo variable

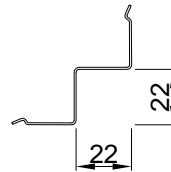
VO 50 094



3208

Inside corner, 90°
Innenecke, 90°
Angle intérieur, 90°
Binnenhoek, 90°
Esquina interior, 90°

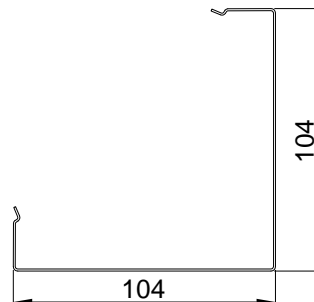
VO 56 001



3209

Outside corner, square, 90°
Aussenecke, eckig, 90°
Angle extérieur, vif, 90°
Buitenhoek, recht, 90°
Esquina exterior 90° cuadrada

VO 56 001



design the way you think

01-12-2007 - version 1

2-2-01

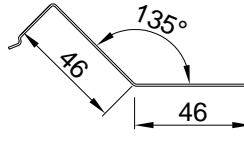
www.maarsgroup.com
Maars Partitioning Systems BV

Corner profiles
Eck Profile
Profil d'angle
Hoekprofielen
Perfil d'esquinas

3212

Inside corner, 135°
Innenecke, 135°
Angle intérieur, 135°
Binnenhoek, 135°
Esquina interior 135° cuadrada

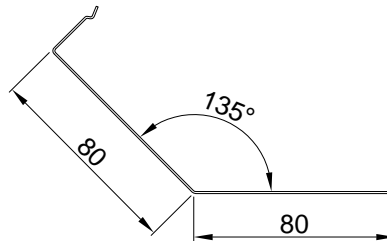
VO 56 001



3213

Outside corner, square, 135°
Aussenecke, eckig, 135°
Angle extérieur, vif, 135°
Buitenhoek, recht, 135°
Esquina exterior 135° cuadrada

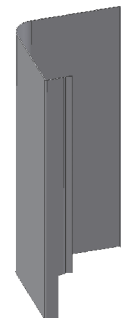
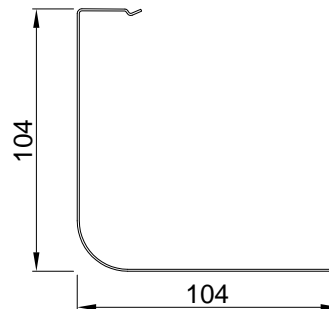
VO 56 001



3217

Outside corner, radius, 90°
Aussenecke, rund, 90°
Angle extérieur, ronde, 90°
Buitenhoek, rond, 90°
Esquina exterior 90° redonda

VO 56 001



design the way you think

01-12-2007 - version 1

2-2-02

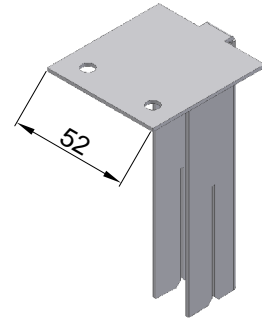
www.maarsgroup.com
Maars Partitioning Systems BV

Studs and crossprofiles
 Stütze und querprofile
 Ossature
 Stijlen & dwarsliggers
 Pies y travesaños

3310

Stud locater, top
 Stützenkopf
 Tête de montant
 Klemstijltop
 Escuadra pie superior

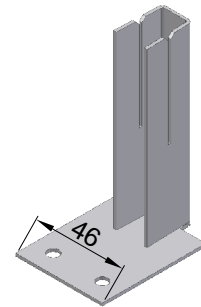
53 03 110



3311

Stud locater, bottom
 Stützenfuss
 Pied de montant
 Klemstijlvoet
 Escuadra pie inferior

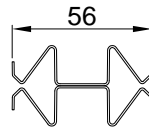
53 03 111



3312

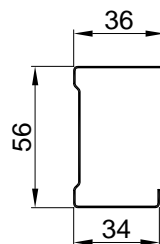
Clamping stud
 Klemmstütze
 Montant
 Klemstijl
 Pie de tabique

VO 56 006



1301

Stud
 Stütze
 Montant
 Stijl
 Pie de tabique



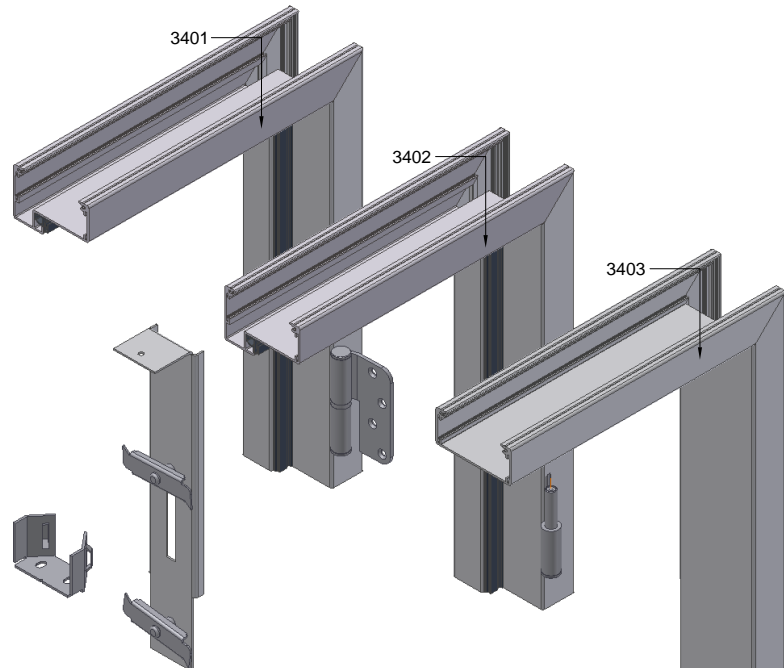
design the way you think

01-12-2007 - version 1

2-3-01

www.maarsgroup.com
 Maars Partitioning Systems BV

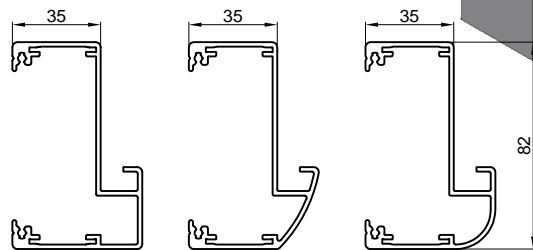
Aluminium doorframes
 Türzarge, Aluminium
 Huisserie, aluminium
 Aluminium kozijnen
 Cerco de puerta de aluminio



3401

Doorframe, aluminium, flush
 Türzarge, Aluminium, stumpf
 Huisserie aluminium (carrée, elliptique ou ronde) pour porte normale
 Deurkozijn, aluminium, stomp
 Cercos de puerta de aluminio

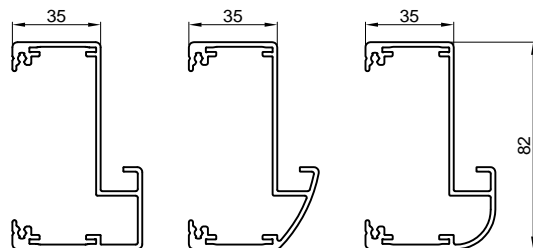
VO 50 210



3402

Doorframe, aluminium, for glassdoors
 Türzarge, Aluminium für Glastür
 Huisserie aluminium (carrée, elliptique ou ronde) porte en verre trempé
 Deurkozijn, aluminium voor hardglasdeur
 Cercos de puerta para puertas de cristal

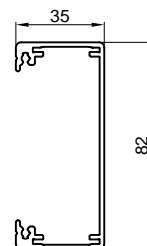
VO 50 230



3403

Doorframe, aluminium, flat for sliding door or double action door
 Türzarge, Aluminium, flach für Schiebetür oder Pendeltür
 Huisserie aluminium baie libre pour porte coulissante ou va-et-vient
 Deurkozijn, aluminium, vlak tbv schuifdeur of doorzwaaideur
 Cerco de puerta, con perfil de remate, para puertas correderas o vai ven

VO 50 211

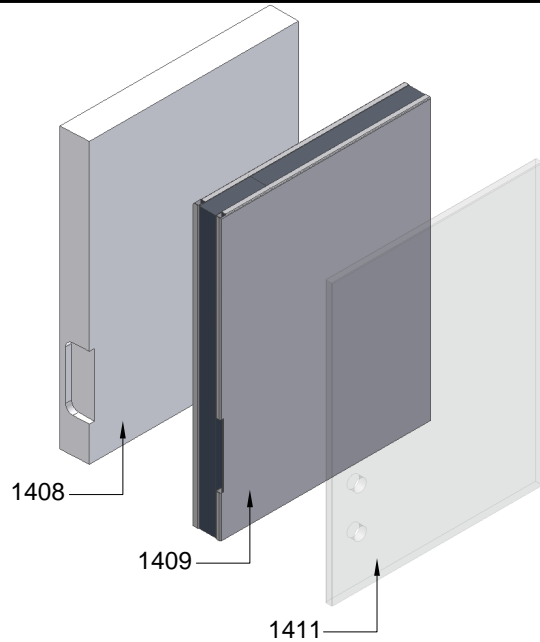


design the way you think

01-12-2007 - version 1

2-4-01

www.maarsgroup.com
 Maars Partitioning Systems BV



1408

Wooden door, flush, full height or with overpanel
Holztür, stumpf, raumhoch oder mit Blende
Porte bois, normale, toute hauteur ou avec imposte
Deur hout, stomp, verdiepingshoog of met spiegelstuk
Puerta de madera de suelo a techo o con montante

VO 50 620

1409

Steel door, flush, full height, 40 mm
Stahltür, stumpf, raumhoch, 40 mm
Porte métallique, normale, toute hauteur, 40 mm
Deur staal, stomp, verdiepingshoog, 40 mm
Puerta metálica de suelo a techo

VO 50 608

1411

Toughened glassdoor, full height or with overpanel
Ganzglastür, raumhoch oder mit Blende
Porte, verre trempé, toute hauteur ou avec imposte
Deur hardglas, met en zonder spiegelstuk
Puertas de cristal, 10mm, de suelo a techo o con montante

VO 50 606



design the way you think

01-12-2007 - version 1

2-4-02

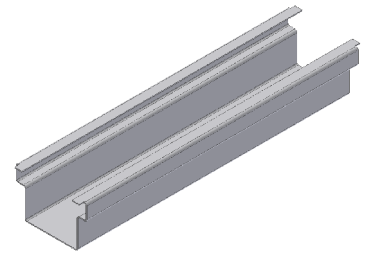
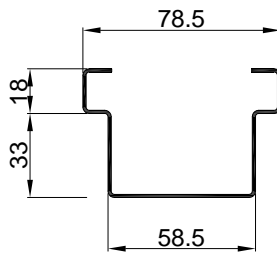
www.maarsgroup.com
Maars Partitioning Systems BV

Material list
 Materialliste
 Liste des composants
 Materiaalstaat
 Lista material

3404

Spacer track
 Ausgleichprofil
 Profil de réglage d'huissérie
 Vereffenstuk
 Profil nivelador de cerco de puerta

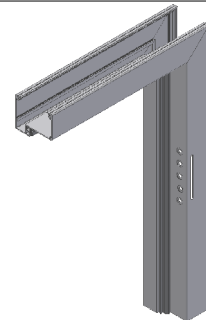
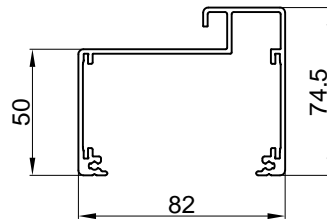
VO 56 007



3406

Doorframe, alu
 Türzarge, alu
 Huissérie carrée, aluminium
 Deurkozijn, alu
 Cercos de puerta de aluminio

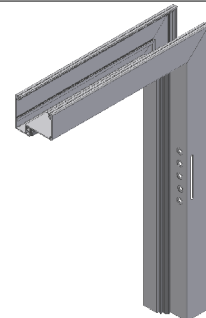
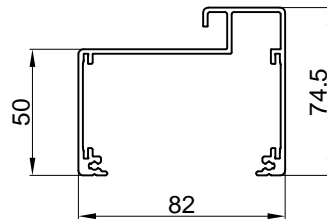
VO 50 212



3407

Doorframe, alu, for glassdoor
 Türzarge, alu, für Ganzglastür
 Huissérie carrée, alu, pour porte en verre trempé
 Deurkozijn, alu, tbv hardglasdeur
 Cercos de puerta para puertas de cristal

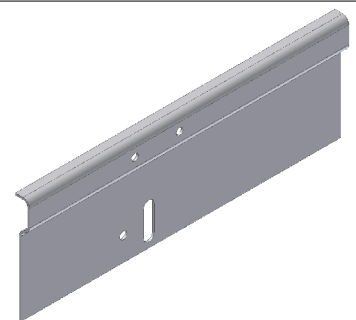
VO 50 231



3413

Mounting plate for sliding door (for rail 1419)
 Montageplatte für Schiebetüren (für rail 1419)
 Profil de montage pour porte coulissante (pour rail 1419)
 Montageplaat tbv schuifdeur (voor rail 1419)
 Placa de montaje (para riel 1419) para puerta corredera

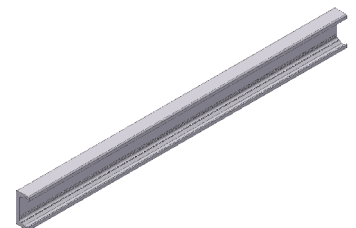
VO 50 682



1419

Rail, for sliding door
 Rail, für Schiebetür
 Rail, pour porte coulissante
 Rail, voor schuifdeur
 Riel, para puerta corredera

VO 50 680



design the way you think

01-12-2007 - version 1

2-4-03

www.maarsgroup.com
 Maars Partitioning Systems BV

Material list
 Materialliste
 Liste des composants
 Materiaalstaat
 Lista material

1413

Set mountingparts for sliding doors steel / wood, see page 3-1-04
 Set montagezubehör für Schiebetüren Stahl / Holz, siehe Seite 3-1-04
 Set support de montage pour porte acier / bois, voir page 3-1-04
 set schuifdeurtoebehoren stalen / houten deur, zie bladzijde 3-1-04
 Set de accesorios de montaje para puerta corredora (acero / madera), ver paginas 3-1-04

50 40 601

1414

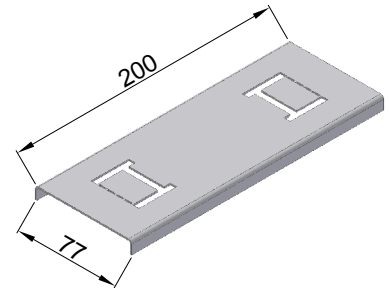
Set mountingparts for sliding glassdoors, see page 3-1-05
 Set montagezubehör für Schiebetüren Glas, siehe Seite 3-1-05
 Set support de montage pour porte verre, voir page 3-1-05
 set schuifdeurtoebehoren hardglasdeur, zie bladzijde 3-1-05
 Set de accesorios de montaje para puerta corredora de cristal, ver paginas 3-1-05

50 40 600

3416

Bracket for aluminium doorframe 35mm
 Verstärckungsbügel für Aluminium Türzarge 35mm
 Anneau pour aluminium huisserie de porte 35mm
 Verstevigingsbeugel tbv aluminium deurkozijn 35mm

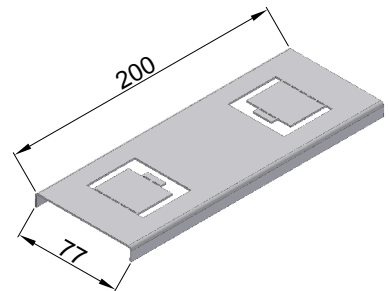
50 40 042



3417

Bracket for aluminium doorframe 50mm
 Verstärckungsbügel für Aluminium Türzarge 50mm
 Anneau pour aluminium huisserie de porte 50mm
 Verstevigingsbeugel tbv aluminium deurkozijn 50mm

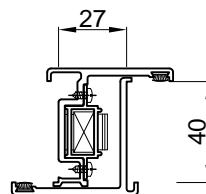
50 40 045



1416

Flush edge doorjoint, aluminium / painted
 Kantriegel für Türblatt, stumpf, aluminium / lackiert
 Crémone pour porte double normale, aluminium / laqué
 Tongnaald voor stompe deur, aluminium / gelakt
 Batiente de aluminio para puerta, aluminio / lacado

VO 50 696



design the way you think

01-12-2007 - version 1

2-4-04

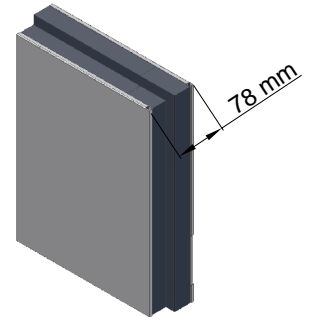
www.maarsgroup.com
 Maars Partitioning Systems BV

Material list
 Materialliste
 Liste des composants
 Materiaalstaat
 Lista material

1423

XL-door, steel
 XL-Tür, Stahl
 Porte XL, acier
 XL-deur, staal
 Puerta de acero XL

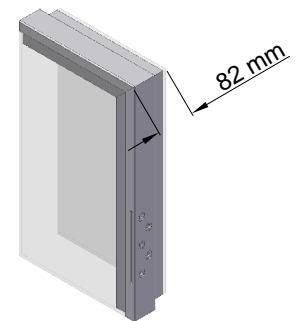
VO 50 609



1424

XL-door, glass
 XL-Tür, Glas
 Porte XL, vitrée
 XL-deur, glas
 Puerta de vidrio XL

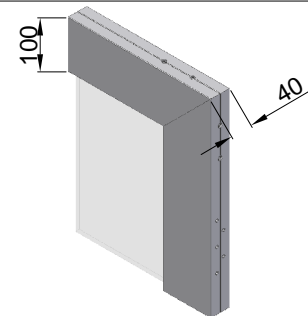
50 40 601



1425

100mm aluminium framedoor
 100mm Aluminium Rahmentür
 Porte cadre alu (100mm)
 100mm aluminium kaderdeur
 Puerta alu kader de 100mm

VO 50 600



1428

Pin for handle and screws for rosettes XL-doors
 Nadel und Rosettenschrauben für XL-Türen
 Tige et vis pour rosette porte XL
 Stift en patentbouten tbv XL-deuren
 Clavija con tornillo para rozet para puerta XL

53 15 848



1456

Oxloc 86x90 mm, inox, doorstop
 Oxloc 86x90 mm, edelstahl, Türpuffer
 Butée de porte Oxloc 86c90 mm, inox
 Oxloc 86x90 mm, rvs, deurstop
 Tope de puerta, inox, oxloc 86x90 mm

53 12 522



design the way you think

01-12-2007 - version 1

2-4-05

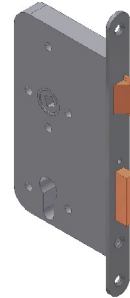
www.maarsgroup.com
 Maars Partitioning Systems BV

Lock
Schloss
Serrure
Slot
Cerradura

1431

Lips 2420-17-U20, 60 pc 72, DIN L/R
Lips 2420-17-U20, 60 pc 72, DIN L/R
Lips 2420-17-U20, 60 pc 72, DIN L/R
Lips 2420-17-U20, 60 pc 72, DIN L/R
Lips 2420-17-U20, 60 pc 72, DIN L/R

53 15 706



1432

Lips 2586, toilet lock DIN L/R
Lips 2586, Toilettenschloss DIN L/R
Lips 2586, serrure de toilettes DIN L/R
Lips 2586, toiletslot DIN L/R
Lips 2586, cerradura de toilet DIN L/R

53 15 702



1433

KFV 115pc dm45 72 for alu. framedoor
KFV 115pc dm45 72 für Alu. Rahmentür
KFV 115pc dm45 72 pour porte cadre alu
KFV 115pc dm45 72 tbv alu. kaderdeur
KFV 115pc dm45 72 para puerta alu. kader

53 15 710



design the way you think

01-12-2007 - version 1

2-4-06

www.maarsgroup.com
Maars Partitioning Systems BV

Cylinder
Zylinder
Cylindre
Cilinder
Cilindro

1436

Cylinder euronorm, Corbin 1/1
Zylinder Euronorm, Corbin 1/1
Cylindre Euronorm, Corbin 1/1
Cilinder euronorm, corbin 1/1
Cilindro, euronorm, corbin 1/1

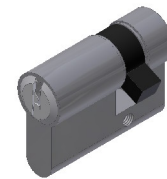
53 10 153



1437

Cylinder euronorm, Corbin 1/2
Zylinder Euronorm, Corbin 1/2
Cylindre Euronorm, Corbin 1/2
Cilinder euronorm, corbin 1/2
Cilindro, euronorm, corbin 1/2

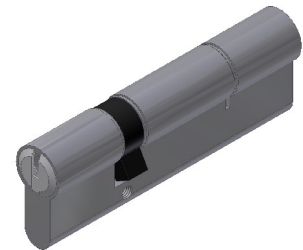
53 10 154



1438

Cylinder extended 30/65 for XL82 doors
Zylinder verlängert 30/65 für XL82-Türen
Cylindre 30/65 pour porte XL 82
Cilinder verlengd 30/65, tbv XL82 deur
Cilindro prolongado 30/65, para puerta XL 82

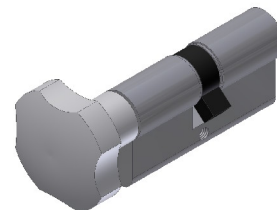
53 15 842



1440

Nemef knob cylinder 115-7
Nemef knopfzylinder 115-7
Cylindre, bouton moleté Nemef 115-7
Nemef knopcilinder 115-7
Tirador redondo con cilindro Nemef 115-7

VO 50 695



design the way you think

01-12-2007 - version 1

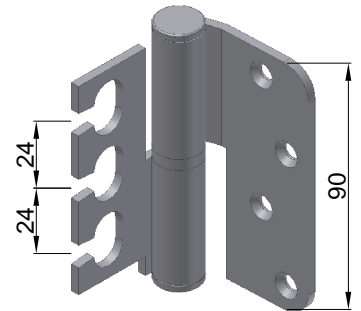
2-4-07

www.maarsgroup.com
Maars Partitioning Systems BV

Hinge
Gelenk
Paumelles
Scharnier
Pernio

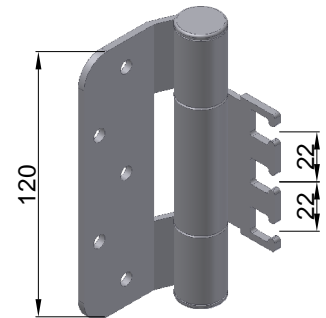
1442

Flush hinge, DIN L/R
Band, stumpf, DIN L/R
Paumelle normale, DIN L/R
Scharnier, stomp, DIN L/R
Pernio normale, DIN L/R



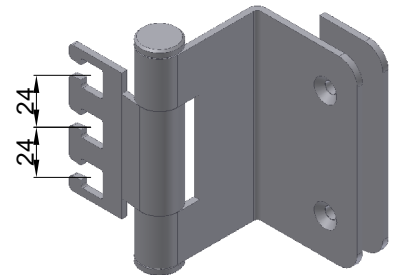
1443

Flush hinge "3D"
Türband stumpf "3D"
Paumelle "3D"
Scharnier "3D"
Pernio "3D"



1444

Flush hinge for glassdoor (<78kg) 10 mm
Band stumpf für Glastür (<78kg) 10 mm
Paumelle normale pour porte verre (<78kg) 10 mm
scharnier tbv hardglasdeur (<78kg) 10 mm
Pernio para puerta de vidrio (<78kg) 10 mm



design the way you think

01-12-2007 - version 1

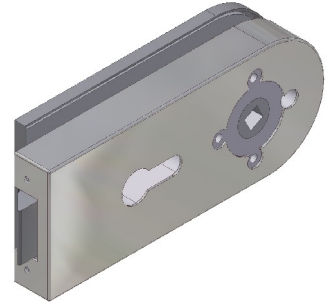
2-4-08

www.maarsgroup.com
Maars Partitioning Systems BV

Material list
Materialliste
Liste des composants
Materiaalstaat
Lista material

1447

Dorma lock Studio Rondo
Dorma Loch Studio Rondo
Serrure Dorma Studio Rondo
Dorma slot Studio Rondo
Dorma cerrure Studio Rondo



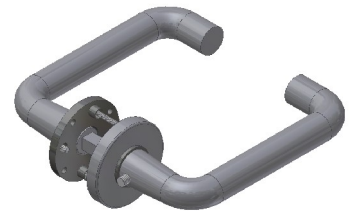
1448

Dorma lock Studio Junior
Dorma Loch Studio Junior
Serrure Dorma Junior
Dorma slot Studio Junior
Dorma cerrure Dorma Junior



1449

Dorma furniture 10.307
Dorma Drücker und Rosetten 10.307
Béquille double et rosace 10.307
Dorma kruk en rozet 10.307
Tirador Dorma con rozet 10.307



1451

ANSA doorhandle and rosette, see page 3-1-06
ANSA Drücker und Rosetten, siehe Seite 3-1-06
Béquille et rosace ANSA, voir page 3-1-06
ANSA kruk en rozet, zie bladzijde 3-1-06
Tirador ANSA con rozet, ver paginas 3-1-06

1452

P+E sliding doorgrip, DV 0396-100-70
P+E Schiebetürgriff, DV 0396-100-70
P+E poignée encastrée, DV 0396-100-07
P+E schuifdeurkom, DV 0396-100-70
Manivela para puerta corredora P+E, DV 0396-100-70



53 19 525



design the way you think

01-12-2007 - version 1

2-4-09

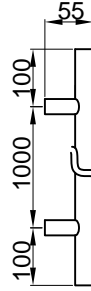
www.maarsgroup.com
Maars Partitioning Systems BV

Material list
 Materialliste
 Liste des composants
 Materiaalstaat
 Lista material

1453

Doorhandle ANSA T 19, 1000 L=1200 mm 5507
 Türgriff ANSA T 19, 1000 L=1200 mm 5507
 Bâton de maréchal ANSA T 19, 1000 L=1200 mm 5507
 ANSA deurgreep T-model 19, 1000 L=1200 mm 5507
 Tirador ANSA T-model 19, 1000 L=1200 mm 5507

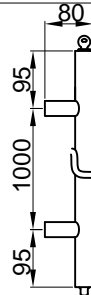
53 12 722



1454

Doorhandle KWS 8199/8179-82 P3 10 mm lockable
 Türgriff KWS 8199/8179-82 P3 10 mm abschliessbar
 Bâton de maréchal avec verrou KWS 8199/8179-82 P3 10 mm
 Deurgreep KWS 8199/8179-82 P3 10 mm afsluitbaar
 Tirador KWS 8199/8179-82 P3 10 mm cerrable

53 12 724



1461

GEZE TS 1000 doorcloser
 GEZE TS 1000 Türschliesser
 Ferme-porte GEZE TS 1000
 GEZE TS 1000 deurdranger
 GEZE TS 1000

53 12 610



design the way you think

01-12-2007 - version 1

2-4-10

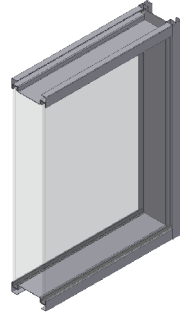
www.maarsgroup.com
 Maars Partitioning Systems BV

Windowframe steel
Glaselement Stahl
Châssis vitré acier
Raamkozijn staal
Cercos de ventana acero

1511

Windowframe, steel, double glazed, see page 3-1-07
Glaselement, stahl, DV, siehe Seite 3-1-07
Châssis vitrés acier, double vitrage, voir page 3-1-07
Raamkozijn, staal, dubbel glas, zie bladzijde 3-1-07
Cercos de ventana, acero, con dos cristal, ver paginas 3-1-07

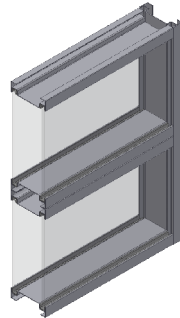
VO 50 121



1512

Windowframe, steel, double glazed, with horizontal banding
Glaselement, stahl, DV, mit horizontaler unterteilung
Châssis vitrés acier, double vitrage, avec séparations horizontales
Raamkozijn, staal, dubbel glas, vakverdeling
Cercos de ventana acero con dos vidrios

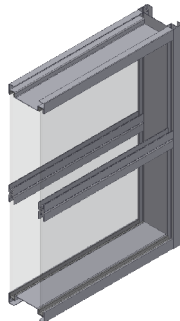
VO 50 121



1512

Windowframe, steel, double glazed, with horizontal banding
Glaselement, stahl, DV, mit horizontaler unterteilung
Châssis vitrés acier, double vitrage, avec séparations horizontales
Raamkozijn, staal, dubbel glas (jal Hor. & Vert.) vakverdeling
Cercos de ventana acero con dos vidrios (persianas horizontales y verticales)

VO 50 121



design the way you think

01-12-2007 - version 1

2-5-01

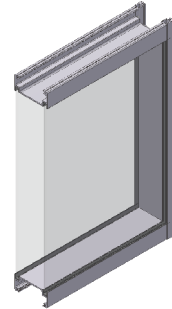
www.maarsgroup.com
Maars Partitioning Systems BV

Windowframe aluminium
 Glaselement Aluminium
 Châssis vitré aluminium
 Raamkozijn aluminium
 Cercos de ventana aluminio

3501

Windowframe, alu, double glazed, full height (+ page 3-1-08)
 Glaselement, Alu, doppelverglasst, raumhoch (+ Seite 3-1-08)
 Châssis vitré, alu, double vitrage, toute hauteur (+ page 3-1-08)
 Raamkozijn, alu, dubbelglas, verdiepingshoog (+ bladzijde 3-1-08)
 Cercos de ventana, alu, chapa con dos cristal (+paginas 3-1-08)

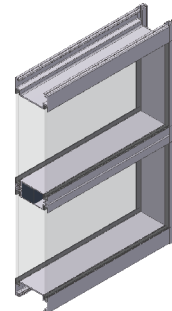
VO 50 116



3502

Windowframe, alu, double glazed, with hor.banding U
 Glaselement, Alu, DV, mit hor.Unterteilung U
 Châssis vitré, alu, double vitrage, avec séperations hor.en "U"
 Raamkozijn, alu, dubbelglas, met hor.verdeling U
 Cercos de ventana alu, con division horizontales U

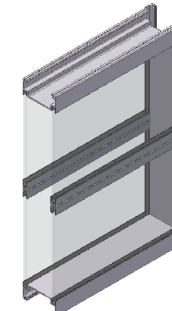
VO 50 116



3503

Windowframe, alu, double glazed, with hor.banding H
 Glaselement, Alu, DV, mit hor.Unterteilung H
 Châssis vitré, alu, double vitrage, avec séperations hor.en "H"
 Raamkozijn, alu, dubbelglas, met hor.verdeling H
 Cercos de ventana alu, con division horizontales H

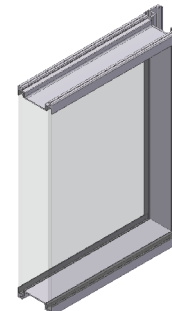
VO 50 116



3504

Windowframe, alu, double glazed, full height, 6,8,10 mm (+ page 3-1-09)
 Glaselement, Alu, doppelverglasst, raumhoch, 6,8,10 mm (+ Seite 3-1-09)
 Châssis vitré, alu, double vitrage, toute hauteur, 6,8,10 mm (+ page 3-1-09)
 Raamkozijn, alu, dubbelglas, verdiepingshoog, 6,8,10 mm (+ bladzijde 3-1-09)
 Cercos de ventana, alu, chapa son dos cristal, 6,8,10 mm (+ paginas 3-1-09)

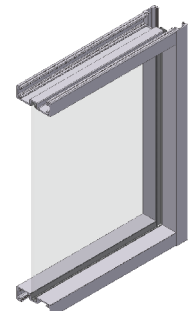
VO 50 119



3507

Windowframe, alu, single glazed, full height, 6,8,10 mm (+ page 3-1-10)
 Glaselement, Alu, einzelverglasst, raumhoch, 6,8,10 mm (+ Seite 3-1-10)
 Châssis vitré, alu, simple vitrage, toute hauteur, 6,8,10 mm (+ page 3-1-10)
 Raamkozijn, alu, enkel glas, verdiepingshoog, 6,8,10 mm (+ bladzijde 3-1-10)
 Cercos de ventana, alu, chapa con un cristal, 6,8, 10 mm (+ paginas 3-1-10)

VO 50 117



design the way you think

01-12-2007 - version 1

2-5-02

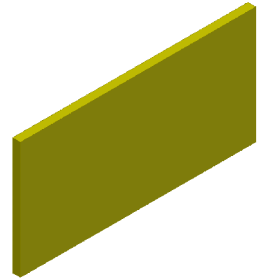
www.maarsgroup.com
 Maars Partitioning Systems BV

Finishing
 Fertigstellung
 Finition de cloison
 Wandafwerking
 Componentes finales

3602

Rockwool pad, 40 mm
 Steinwollplatte, 40 mm
 Laine de roche, 40 mm
 Steenwolpaneel, 40 mm
 Lana de roca, 40 mm

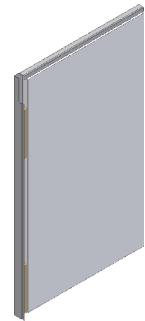
53 01 324



3603

Steel wall panel
 Wandpaneel, Stahl
 Parement acier
 Wandpaneel, staal
 Paneles acero

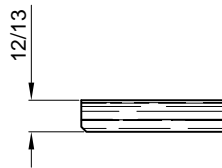
VO 50 315



3604

Wallpanel, melamin
 Wandpaneel Melamin
 Parement mélaminé
 Wandpaneel melamine
 Paneles madera

VO 53 200



3605

Clampingstrip melamin panel
 Klemprofil Melamin Paneel
 Profil de serrage pour panneau melaminé
 Klemstrip tbv melamine paneel
 ...

VO 56 011



design the way you think

01-12-2007 - version 1

2-6-01

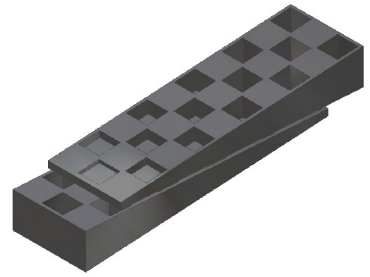
www.maarsgroup.com
 Maars Partitioning Systems BV

Finishing
 Fertigstellung
 Finition de cloison
 Wandafwerking
 Componentes finales

3702

Adjustable wedges for support track
 Stelleile
 Cale crantée
 Stelwiggen
 Cuña de nivelación

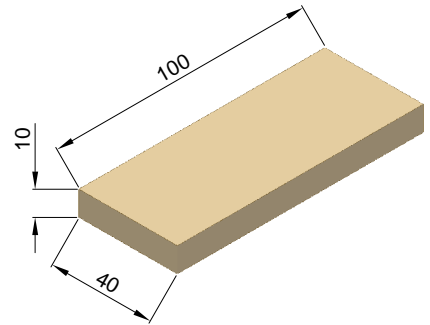
53 09 515



3703

Shim
 Einlage
 Cale plate
 Vuilstuk
 Calzo de cuña

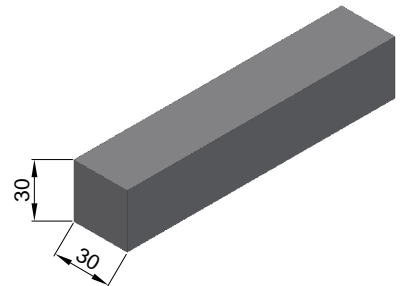
53 09 516



3704

Foam infill
 Abdichtungsstreifen
 Mousse
 Schuimband
 Neopreno entre ventana

53 01 123



3705

Repairset 500ml
 Reparatursatz 500ml
 Ensemble de retouche 500ml
 Reparatieset 500ml
 ...

VO 42 501



3706

Aerosol
 Sprühdose
 Bombe de peinture
 Spuitbus
 Bomba de pintura, finition de lisse

VO 42 500



design the way you think

01-12-2007 - version 1

2-7-01

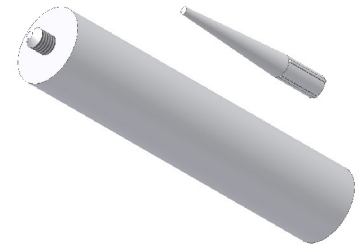
www.maarsgroup.com
 Maars Partitioning Systems BV

Finishing
Fertigstellung
Finition de cloison
Wandafwerking
Componentes finales

3708

Filler kit with acryl, white
Tube mit Akrylkitt, weiss
Cartouche de mastic acrylique, blanc
Tube met acrylkit, wit
...

14 00 520



3710

String, 6mm, round, black
Stringsnur, 6mm ronde, schwarz
String, 6mm ronde, noir
Snoer, 6mm rond, zwart
Cuerda, 6mm, redondo, negro

53 01 021



3711

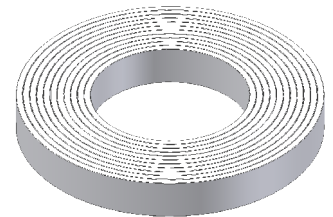
EPDM tape, 10x5mm, black
EPDM band, 10x5mm, schwarz
EPD maisse, 10x5mm, noir
EPDM band, 10x5mm, zwart
EPDM cuerda, 10x5mm, negro

53 01 020



1705

Foamtape, one-sided adhesive, white/black 3x9 & 6x9 mm
Dichtungsstreifen, einzelklebend, weiss/schwarz 3x9 & 6x9 mm
Joint mousse, adh sif 1 face, blanc/noir, 3x9 & 6x9 mm
Eenzijdig klevend schuimband, wit/zwart, 3x9 & 6x9 mm
Mousse adhesivo, blanc/noir, 3x9 & 6x9 mm



design the way you think

01-12-2007 - version 1

2-7-02

www.maarsgroup.com
Maars Partitioning Systems BV

Finishing
Fertigstellung
Finition de cloison
Wandafwerking
Componentes finales

3801

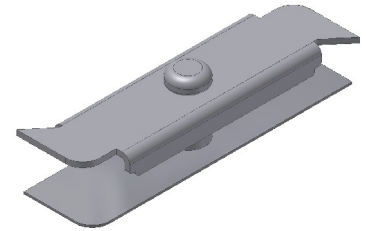
Doorframe bracket to ceilingtrack
Verbindung Zarge - Deckenprofil
Equerre de fixation huisserie/lisse haute
Koppelstuk kozijn / bovenplint
...



3802

Twistconnector frame / frame - alu / alu
Drehklipsverbindung Rahmen / Rahmen - alu / alu
Agrafe châssis / châssis - alu / alu
Klembeugel kozijn / kozijn - alu / alu
Anclaje cercos / cercos - alu / alu

53 03 107



3807

Self tapping screw, 4,8 x 32 mm
Blechschaube, 4,8 x 32 mm
Vis parker, 4,8 x 32 mm
Parker 4,8 x 32 mm
Tornillo, 4,8 x 32 mm

70 11 251

3808

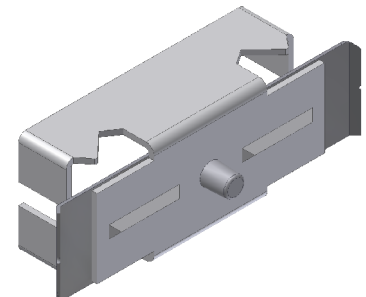
Self-drilling Teks screw 4,8 x 32 mm
Selbstbohrende Schraube, 4,8 x 32 mm
Vis autoforeuse Teks, 4,8 x 32 mm
Parker, zelfborend, 4,8 x 32 mm
Tornillo, ??, 4,8 x 32 mm

70 11 502

3812

Twistconnector panel String / frame - mela / alu
Drehklipsverbindung Paneel String / Rahmen - mela / alu
Agrafe panneau String / châssis - mela / alu
Klembeugel paneel String / kozijn - mela / alu
Anclaje String / cercos - mela / alu

53 03 102



design the way you think

01-12-2007 - version 1

2-8-01

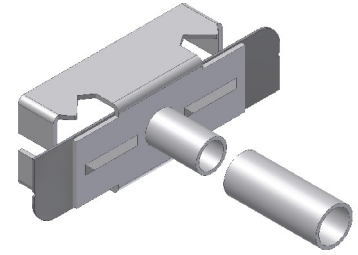
www.maarsgroup.com
Maars Partitioning Systems BV

Finishing
Fertigstellung
Finition de cloison
Wandafwerking
Componentes finales

3813

Twistconnector panel String / frame - mela / steel
Drehklipsverbindung Paneel String / Rahmen - mela / Stahl
Agrafe panneau String / châssis - mela / acier
Klembeugel paneel String / kozijn - mela / staal
Anclaje String/ cercos - mela / acero

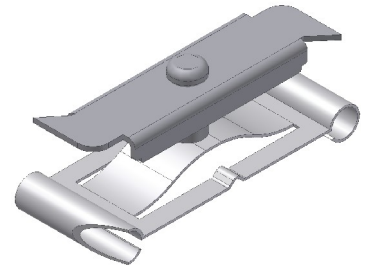
53 03 103



3814

Twistconnector frame / frame - steel / alu
Drehklipsverbindung Rahmen / Rahmen - Stahl / alu
Agrafe châssis / châssis - acier / alu
Klembeugel kozijn / kozijn - staal / alu
Anclaje cercos / cercos - acero / alu

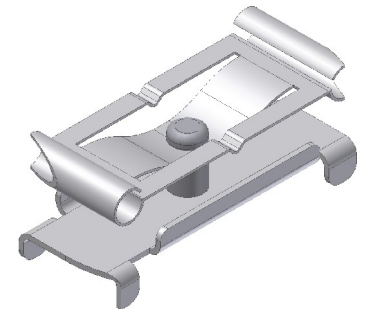
53 03 106



3815

Twistconnector frame / frame - steel / steel
Drehklipsverbindung Rahmen / Rahmen - Stahl / Stahl
Agrafe châssis / châssis - acier / acier
Klembeugel kozijn / kozijn - staal / staal
Anclaje cercos / cercos - acero / acero

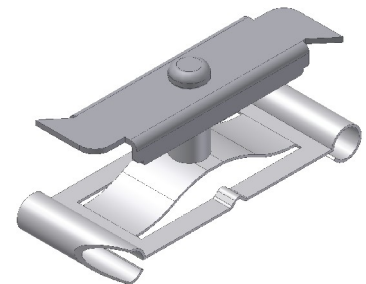
53 03 108



3816

Twistconnector frame / frame - steel / alu, 5 mm
Drehklipsverbindung Rahmen / Rahmen - Stahl / alu, 5 mm
Agrafe châssis / châssis - acier / alu, 5 mm
Klembeugel kozijn / kozijn - staal / alu, 5 mm
Anclaje cercos / cercos - acero / alu, 5mm

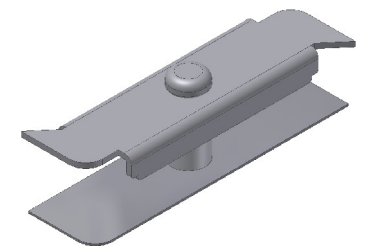
53 03 126



3817

Twistconnector frame / frame - alu / alu, 5 mm
Drehklipsverbindung Rahmen / Rahmen - alu / alu, 5 mm
Agrafe châssis / châssis - alu / alu, 5 mm
Klembeugel kozijn / kozijn - alu / alu, 5 mm
Anclaje cercos / cercos - alu / alu 5 mm

53 03 127



design the way you think

01-12-2007 - version 1

2-8-02

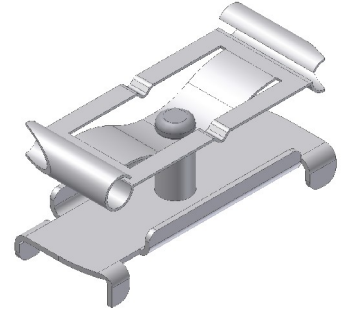
www.maarsgroup.com
Maars Partitioning Systems BV

Finishing
Fertigstellung
Finition de cloison
Wandafwerking
Componentes finales

3818

Twistconnector frame / frame - steel / steel, 5 mm
Drehklipsverbindung Rahmen / Rahmen - Stahl / Stahl, 5 mm
Agrafe châssis / châssis - acier / acier, 5 mm
Klembeugel kozijn / kozijn - staal / staal, 5 mm
Anclaje cercos / cercos - acero / acero 5 mm

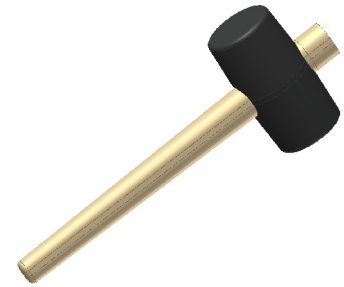
53 03 128



3820

Soft rubber hammer GR3
Gummihammer GR3
Marteau caoutchouc GR3
Rubberhamer GR3
Martillo de goma GR3

53 09 512



3821

Picturehook
Bilderhaken
Crochet pour tableau
Schilderijhaak
Gancho pintura

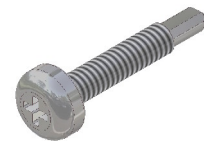
53 09 521



3822

Spax screw 4,5 x 12 mm
Spax schraube 4,5 x 12 mm
Spax vis 4,5 x 12 mm
Spax bolkop 4,5 x 12 mm
spax 4,5 x 12 mm

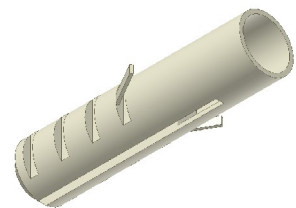
70 11 514



1802

Wallplug nr.6
Dübel nr.6
Cheville nr.6
Plug nr.6
Tavo no.6

70 13 560



design the way you think

01-12-2007 - version 1

2-8-03

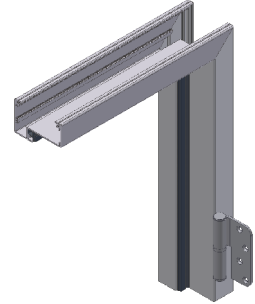
www.maarsgroup.com
Maars Partitioning Systems BV

Steel XL-door + doorframe
 Stahl XL-Tür + Zarge
 Porte acier XL + huisserie
 Stalen XL-deur + kozijn
 Puerta de acero XL + cercos de puerta

3401

Doorframe, aluminium, square, incl.hinges 1442
 Türzarge, Aluminium, eckig, inklusive Bänder 1442
 Huisserie carrée, aluminium, avec paumelle 1442
 Deurkozijn, aluminium, hoekig, incl.scharnier 1442
 Cercos de puerta de aluminio, recto, inclusivo pernio 1442

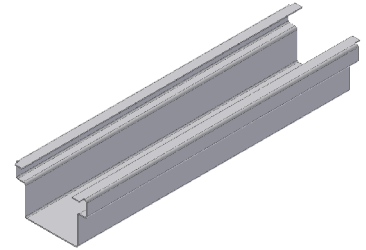
VO 50 210



3404

Spacer track for doorframes
 Ausgleichprofil
 Profil de réglage d' huisserie
 Vereffenstuk
 Perfil nivelador de cerco de puerta

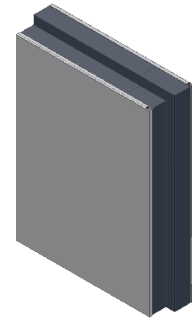
VO 56 007



1423

XL-door, steel, 78 mm
 XL-Tür, Stahl, 78 mm
 Porte XL, acier, 78 mm
 XL-deur, staal, 78 mm
 Puerta de acero XL, 78 mm

VO 50 609



1428

Pin for handle and screws for roses XL-door
 Nadel und Rosettenschrauben für XL-Tür
 Tige et vis pour rosette porte XL
 stift en patentbouten, tbv XL deur
 Clavija con tornillo para rozet para puerta XL

53 15 848



design the way you think

01-12-2007 - version 1

3-1-01

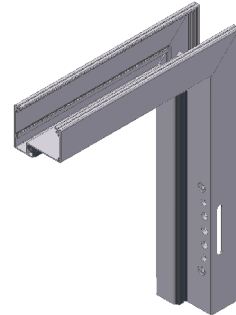
www.maarsgroup.com
 Maars Partitioning Systems BV

XL-Glassdoor + doorframe
 XL-Glastür + Zarge
 Porte XL vitrée + huisserie
 XL-Glasdeur + kozijn
 Puerta de vidrio XL + cercos de puerta

3406

50mm Doorframe with "3D" hinges, alu, square
 50mm Türzarge mit "3D" Bänder, alu, eckig
 Huisserie carrée 50mm, aluminium, avec paumelle "3D"
 50mm Deurkozijn met "3D" scharnieren, alu, recht
 50mm Cercos de puerta de aluminio con pernio "3D", recto

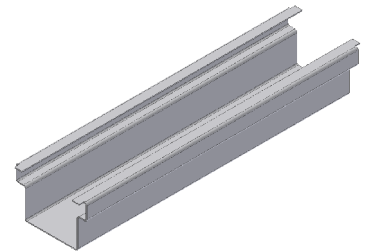
VO 50 212



3404

Spacer track for doorframes
 Ausgleichprofil
 Profil de réglage d' huisserie
 Vereffenstuk
 Perfil nivelador de cerco de puerta

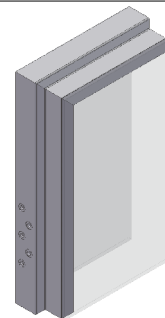
VO 56 007



1424

XL-door, glass, 82 mm
 XL-Tür, Glas, 82 mm
 Porte XL, vitrée, 82 mm
 XL-deur, glas, 82 mm
 Puerta de vidrio XL, 82 mm

VO 50 601



1428

Pin for handle and screws for roses XL-door
 Nadel und Rosettenschrauben für XL-Tür
 Tige et vis pour rosette porte XL
 stift en patentbouten, tbv XL deur
 Clavija con tornillo para rozet para puerta XL

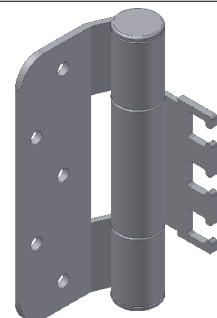
53 15 848



1443

Flush hinge 120 mm, "3D"
 Türband stumpf 120 mm, "3D"
 Paumelle 120 mm, "3D"
 Scharnier stomp 120 mm, "3D"
 Pernio 120 mm, "3D"

53 12 690



design the way you think

01-12-2007 - version 1

3-1-02

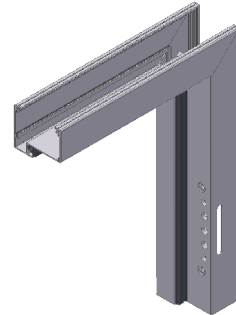
www.maarsgroup.com
 Maars Partitioning Systems BV

100 mm alu. framed door
 100 mm alu. Rahmentür
 Porte 100mm vitrée cadre alu + huisserie
 100 mm alu. kaderdeur
 Puerta de kader de 100 mm

3406

50mm Doorframe with "3D" hinges, alu, square
 50mm Türzarge mit "3D" Bänder, alu, eckig
 Huisserie carrée 50mm, aluminium, avec paumelle "3D"
 50mm Deurkozijn met "3D" scharnieren, alu, recht
 50mm Cercos de puerta de aluminio con pernio "3D", recto

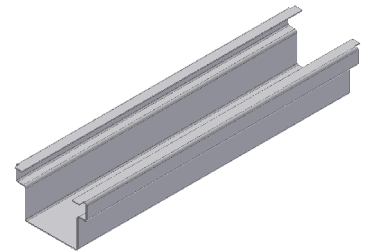
VO 50 212



3404

Spacer track for doorframes
 Ausgleichprofil
 Profil de réglage d' huisserie
 Vereffenstuk
 Profil nivelador de cerco de puerta

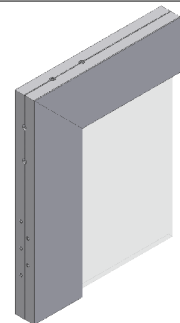
VO 56 007



1425

100mm aluminium framed door
 100mm aluminium Rahmentür
 Porte cadre alu (100 mm)
 100mm aluminium kaderdeur
 Puerta aluminio kader de 100mm

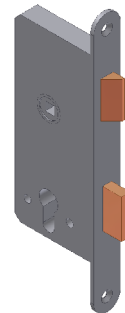
VO 50 600



1433

KVF 115 pc dm45 72 for aluminium framed door
 KVF 115 pc dm45 72 für aluminium Rahmentür
 KVF 115 pc dm45 72 pour porte cadre alu
 KVF 115 pc dm45 72, tbv aluminium kaderdeur
 KVF 115 pc dm45 72 para puerta aluminio kader 100mm

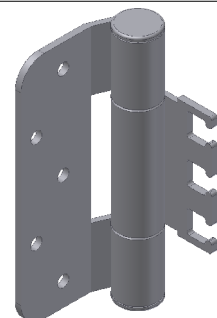
53 15 710



1443

Flush hinge 120 mm, "3D"
 Türband stumpf 120 mm, "3D"
 Paumelle 120 mm, "3D"
 Scharnier stomp 120 mm, "3D"
 Pernio 120 mm, "3D"

53 12 690



design the way you think

01-12-2007 - version 1

3-1-03

www.maarsgroup.com
 Maars Partitioning Systems BV

Sliding door, steel
Schiebetür, Stahl
Porte acier coulissante
Schuifdeur, staal
Puertas correderas, acero

1409

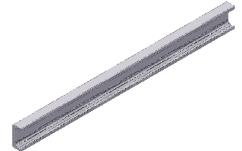
Sliding door, steel, 40 mm
Schiebetür, Stahl, 40 mm
Porte coulissante, acier, 40 mm
Schuifdeur, staal, 40 mm
Puertas correderas, acero, 40 mm



VO 50 608

1419

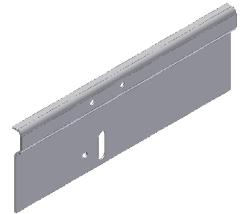
Rail, for sliding door
Rail, für Schiebetür
Rail, pour porte coulissante
Rail, tbv schuifdeur
Riel, para puerta cooredora



VO 50 680

3413

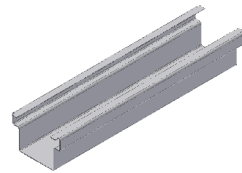
Cover for sliding door (for rail 1419) (ML)
Schützkappe für Schiebetür (für rail 1419) (ML)
Profilé de montage pour porte coulissante (pour rail 1419) (ML)
Montageplaat tbv schuifdeur (voor rail 1419) (ML)
Placa de montaje (para riel 1419) para puerta corredora (ML)



VO 50 682

3404

Spacer track
Ausgleichprofil
Profil de réglage d'huissérie
Vereffenstuk
Profil nivelador de cerco de puerta

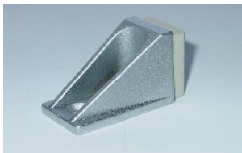


VO 56 007

1413

Set of fittingmaterials for sliding doors steel / wood
Set montagezubehör für Schiebetüren Stahl / Holz
Set support de montage pour porte acier / bois
Set bevestigingsmiddelen stalen / houten schuifdeur
Set de accesorios de montaje para puerta corredora (acero / madera)

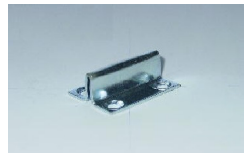
50 40 601



2x



2x



1x



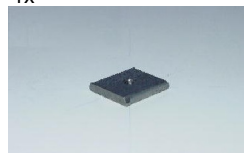
13x



6x



4x



2x



design the way you think

01-12-2007 - version 1

3-1-04

www.maarsgroup.com
Maars Partitioning Systems BV

Sliding door, glass
 Schiebetür, Glas
 Porte coulissante, verre
 Schuifdeur, glas
 Puertas correderas, cristal

1411

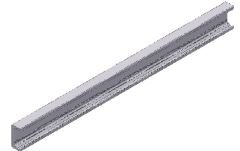
Sliding door, glass, 10 mm
 Schiebetür, Glas, 10 mm
 Porte coulissante, verre, 10 mm
 Schuifdeur, glas, 10 mm
 Puertas correderas, cristal, 10 mm



VO 50 606

1419

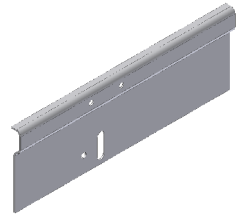
Rail, for sliding door
 Rail, für Schiebetür
 Rail, pour porte coulissante
 Rail, tbv schuifdeur
 Riel, para puerta corredora



VO 50 680

3413

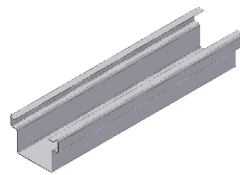
Cover for sliding door (for rail 1419) (ML)
 Schützkappe für Schiebetür (für rail 1419) (ML)
 Profilé de montage pour porte coulissante (pour rail 1419) (ML)
 Montageplaat tbv schuifdeur (voor rail 1419) (ML)
 Placa de montaje (para riel 1419) para puerta corredora (ML)



VO 50 682

3404

Spacer track
 Ausgleichprofil
 Profil de réglage d'huissérie
 Vereffenstuk
 Profil nivelador de cerco de puerta

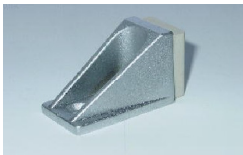


VO 56 007

1414

Set mountingparts for sliding doors glass
 Set montagezubehör für Schiebetüren Glas
 Set support de montage pour porte verre
 Set schuifdeurtoebehoren hardglasdeur
 Set de accesorios de montaje para puerta corredora de cristal

50 40 600



2x



2x



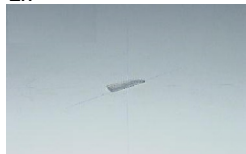
2x



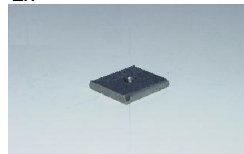
13x



6x



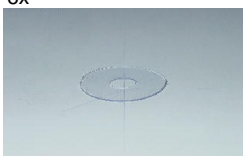
4x



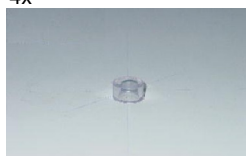
2x



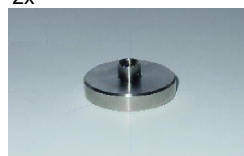
3x



6x



3x



3x



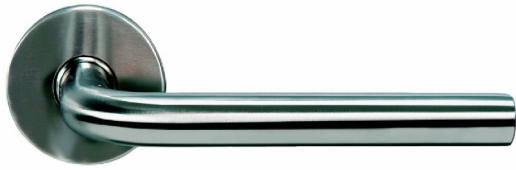
design the way you think

01-12-2007 - version 1

3-1-05

www.maarsgroup.com
 Maars Partitioning Systems BV

ANSA doorhandles and rosettes
 ANSA Drücker und Rosetten
 ANSA Poignée et rosette
 ANSA krukken en rozetten
 Tirador ANSA con rozet



ANSA L 16
 art.nr.53.15.800



ANSA L 16 90°
 art.nr.53.15.802



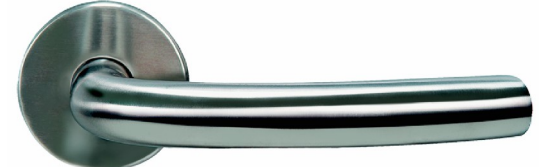
ANSA L 19
 art.nr.53.15.804



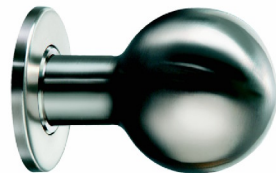
ANSA U 19
 art.nr.53.15.808



ANSA L 19 90°
 art.nr.53.15.806



ANSA L 19 90°
 art.nr.53.15.810



round doorknob
 art.nr.53.15.812



flat doorknob
 art.nr.53.15.814



PC
 art.nr.53.15.820



Blind
 art.nr.53.15.822



Keso / kaba
 art.nr.53.15.824



Toilet
 art.nr.53.15.826



design the way you think

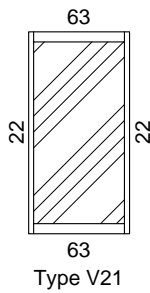
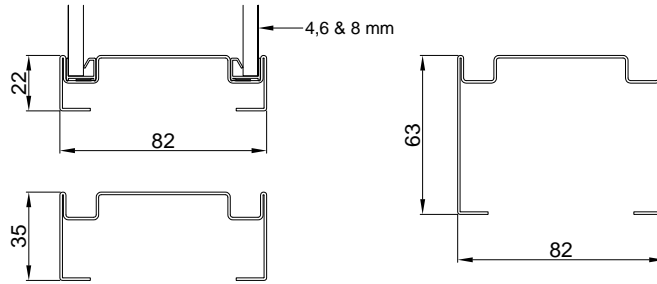
01-12-2007 - version 1

3-1-06

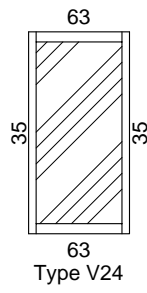
www.maarsgroup.com
 Maars Partitioning Systems BV

Glaselement steel
Glaselement Stahl
Châssis vitré acier
Glaselement staal
Cercos de ventana acero

Element 1511
VO 50 121



Type V21



Type V24



design the way you think

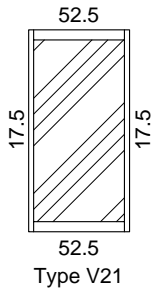
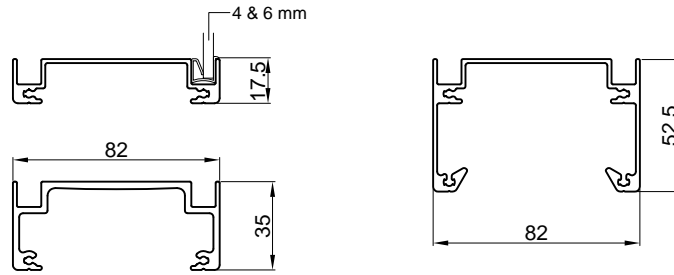
01-12-2007 - version 1

3-1-07

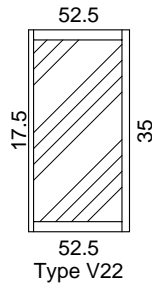
www.maarsgroup.com
Maars Partitioning Systems BV

Glasselement aluminium
Glaselement Aluminium
Châssis vitré aluminium
Glaselement aluminium
Cercos de ventana aluminio

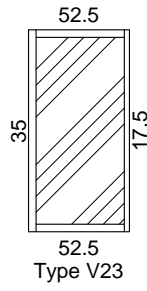
Element 3501
VO 50 116



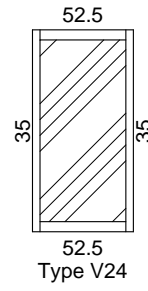
Type V21



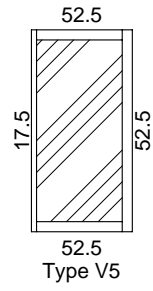
Type V22



Type V23



Type V24



Type V5



design the way you think

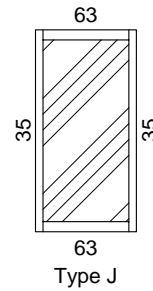
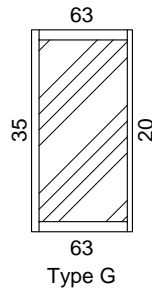
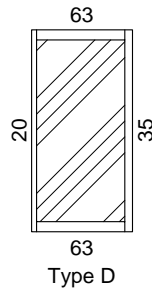
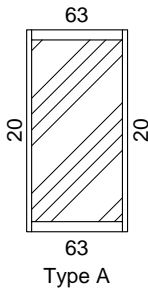
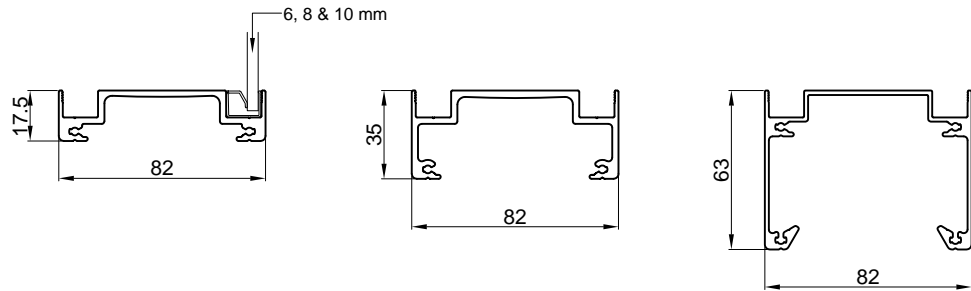
01-12-2007 - version 1

3-1-08

www.maarsgroup.com
Maars Partitioning Systems BV

Glasselement aluminium
 Glaselement Aluminium
 Châssis vitré aluminium
 Glaselement aluminium
 Cercos de ventana aluminio

Element 3504
 VO 50 119



design the way you think

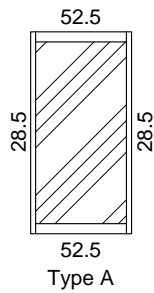
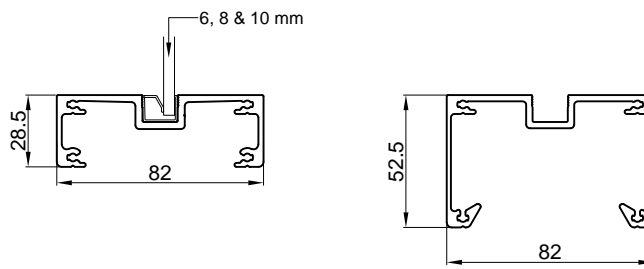
01-12-2007 - version 1

3-1-09

www.maarsgroup.com
 Maars Partitioning Systems BV

Glaselement aluminium
Glaselement Aluminium
Châssis vitré aluminium
Glaselement aluminium
Cercos de ventana aluminio

Element 3507
VO 50 117



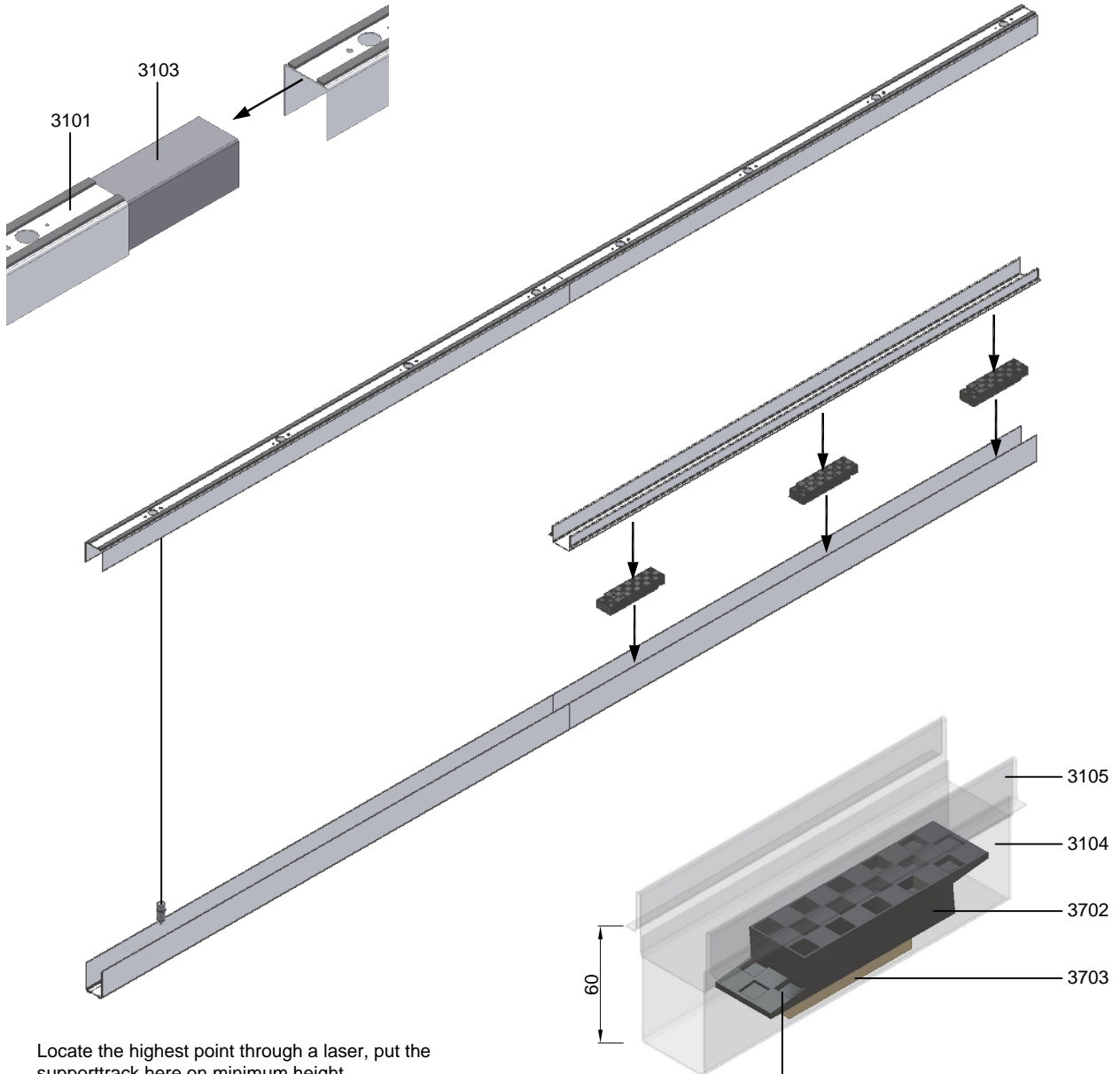
design the way you think

01-12-2007 - version 1

3-1-10

www.maarsgroup.com
Maars Partitioning Systems BV

Floor and ceiling tracks
 Boden- und Deckenprofile
 Lisses basses et lisses hautes
 Vloer- en plafondprofielen
 Rodapie et rodatcho



Locate the highest point through a laser, put the supporttrack here on minimum height.
 Erection starts next with the passage wall.

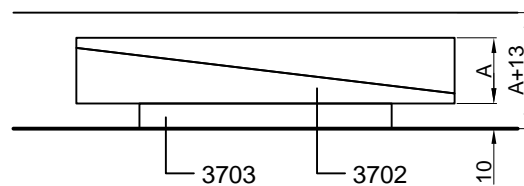
Bestimm das höchste Punkt per Laser, setze das Stellprofil hier auf Mindesthöhe.
 Danach fang an mit Montage der Flurwand.

Déterminer le point le plus haut avec un laser, placez le profil de réglage au niveau minimum.
 Ensuite démarrer le montage par la cloison de circulation.

Bepaal het hoogste punt met behulp van een laser, plaats de stelplint hier op een minimum hoogte.
 Start vervolgens de montage van de gangwand.

...
 ...
 ...

6 set per 3m¹ floortrack
 6 Satz pro 3m¹ Sockelprofil
 6 jeu par 3m¹ lisse basse
 6 paar per 3m¹ plint
 6...



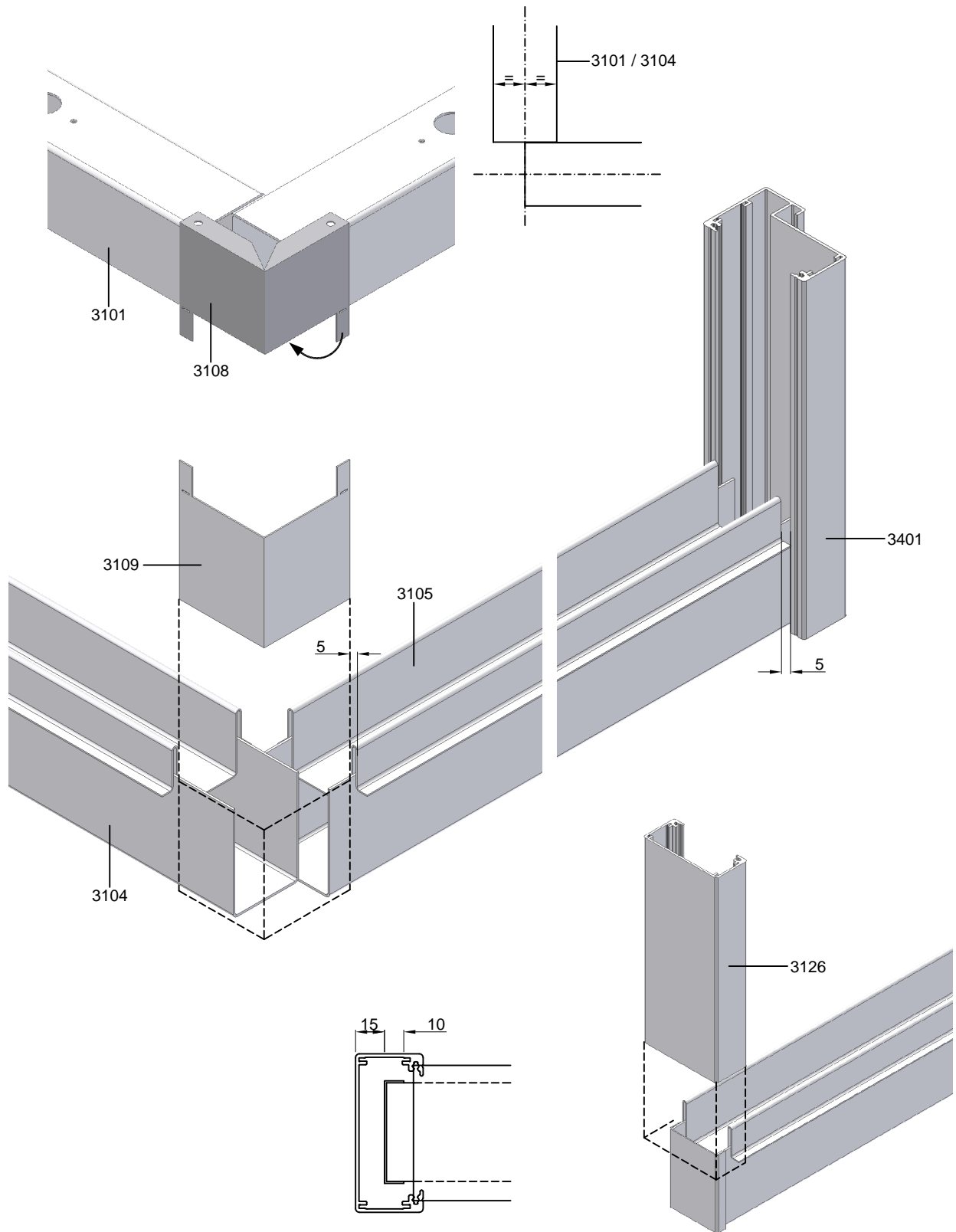
design the way you think

01-12-2007 - version 1

4-1-01

www.maarsgroup.com
 Maars Partitioning Systems BV

Cornercover, eodncover
Eckstück, Endkappe
Angle extérieur, embout
Hoekkap, eindkap
Remate esquina, remate final



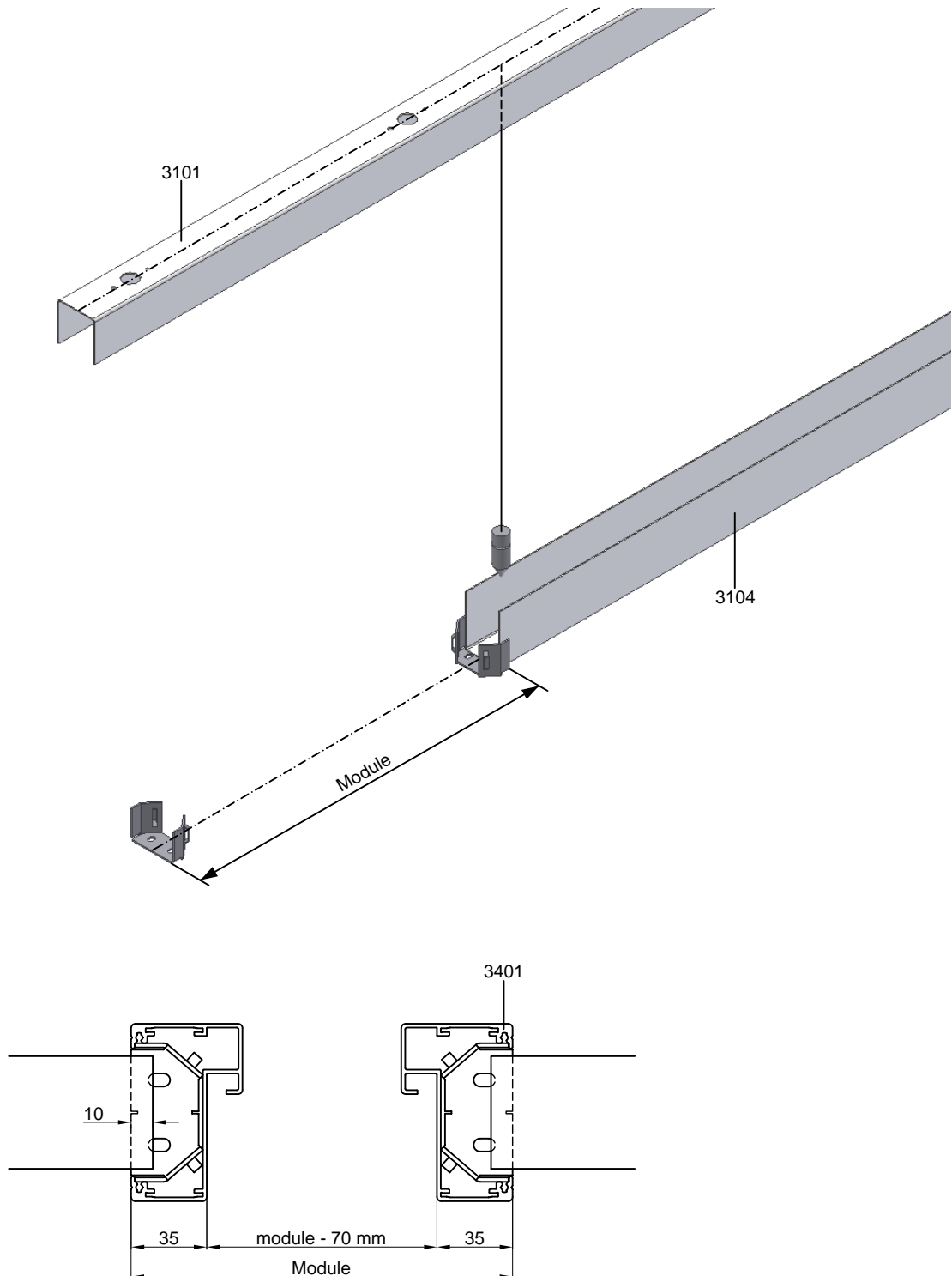
design the way you think

01-12-2007 - version 1

4-1-02

www.maarsgroup.com
Maars Partitioning Systems BV

Positioning doorframe
Positionieren der Türzarge
Implantation huisserie
Positionering deurkozijn
Marcación cercos de puerta



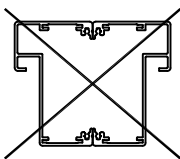
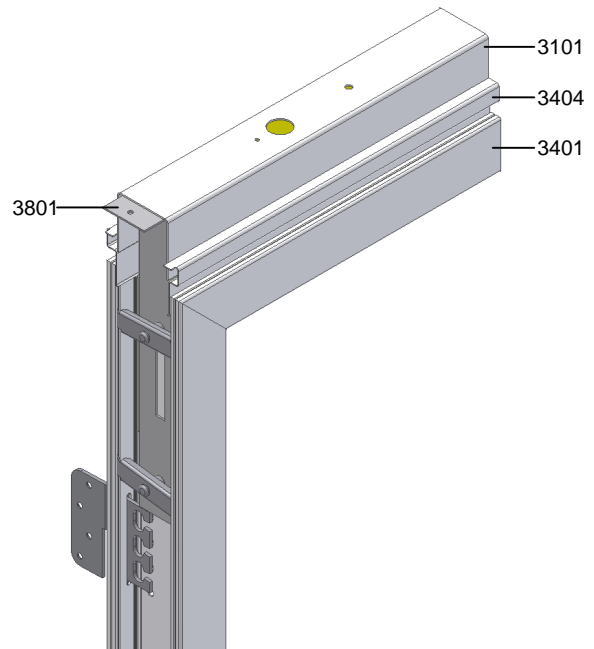
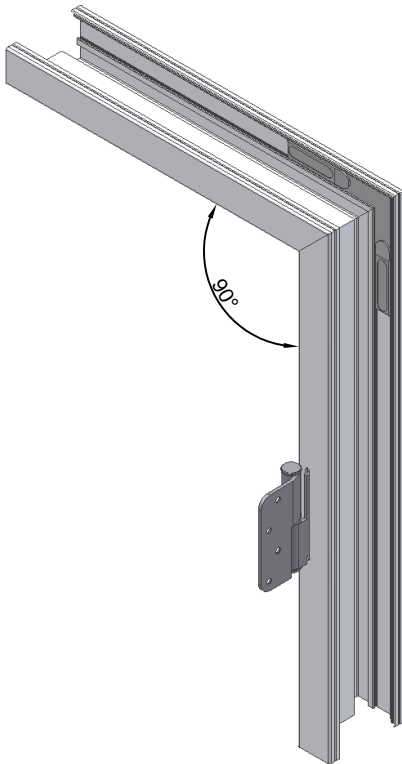
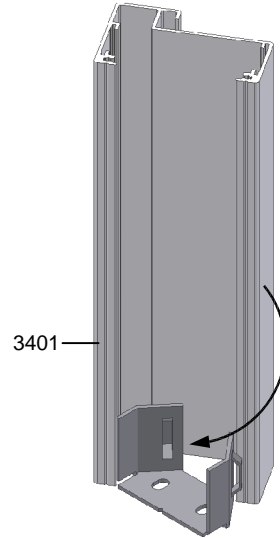
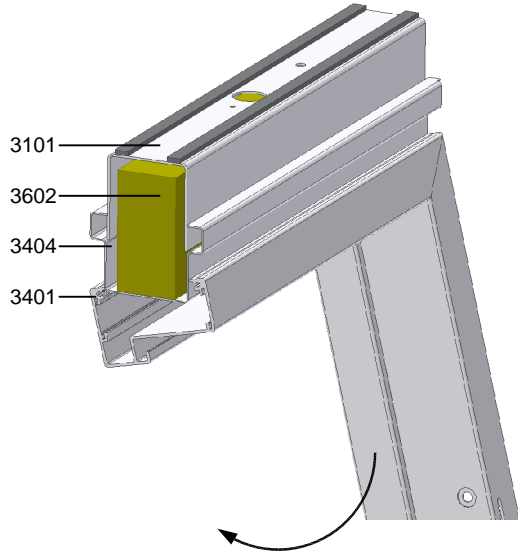
design the way you think

01-12-2007 - version 1

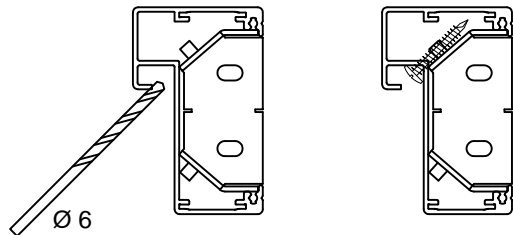
4-1-03

www.maarsgroup.com
Maars Partitioning Systems BV

Mounting doorframe
 Einbau Türzarge
 Montage huisserie
 Montage deurkozijn
 Montar cercos de puerta



not possible
 nicht möglich
 pas possible
 niet mogelijk
 no posible



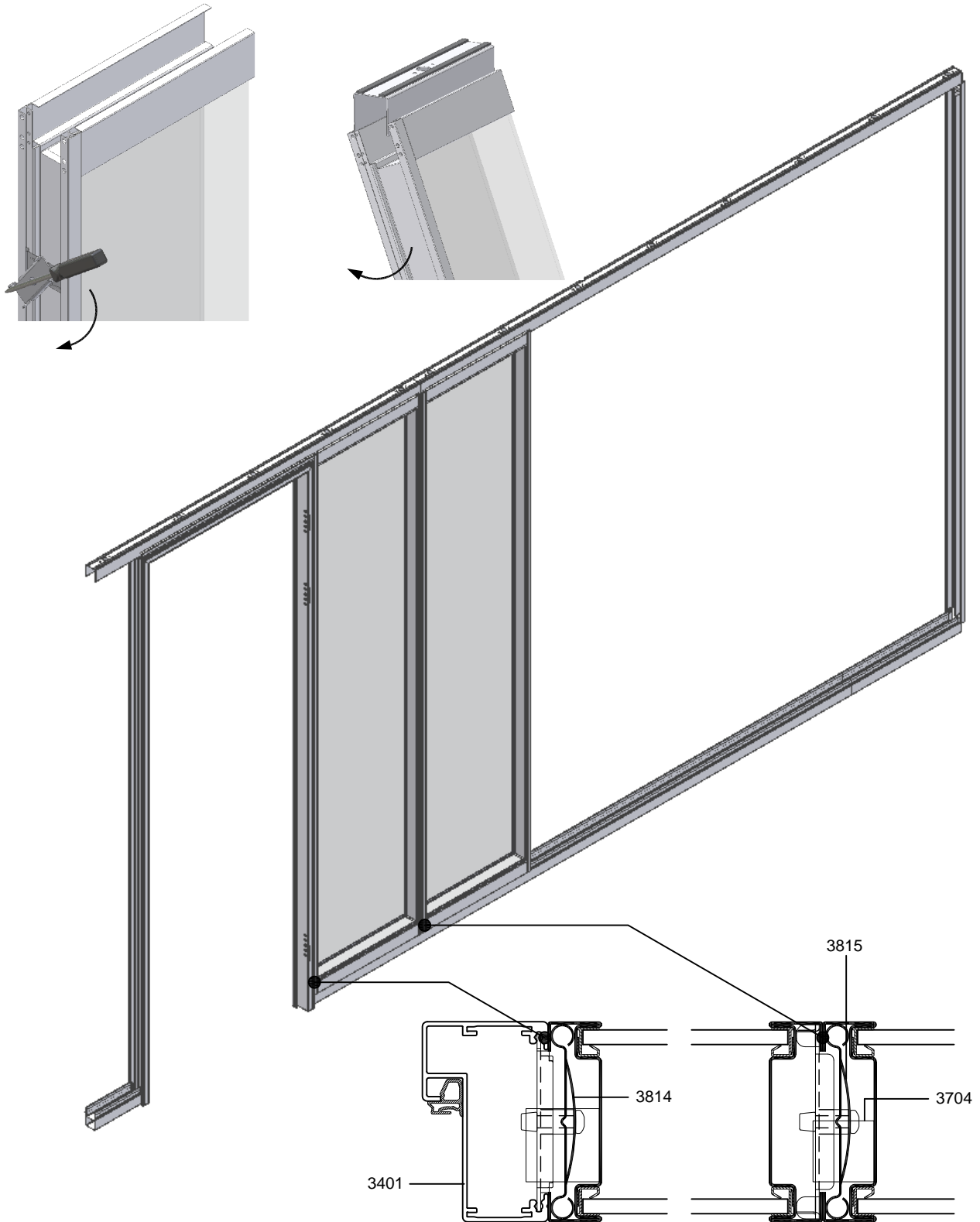
design the way you think

01-12-2007 - version 1

4-1-04

www.maarsgroup.com
 Maars Partitioning Systems BV

Mounting windowframe
Einbau Glaselement
Montage châssis vitre
Montage glaselement
Montar cercos de ventana



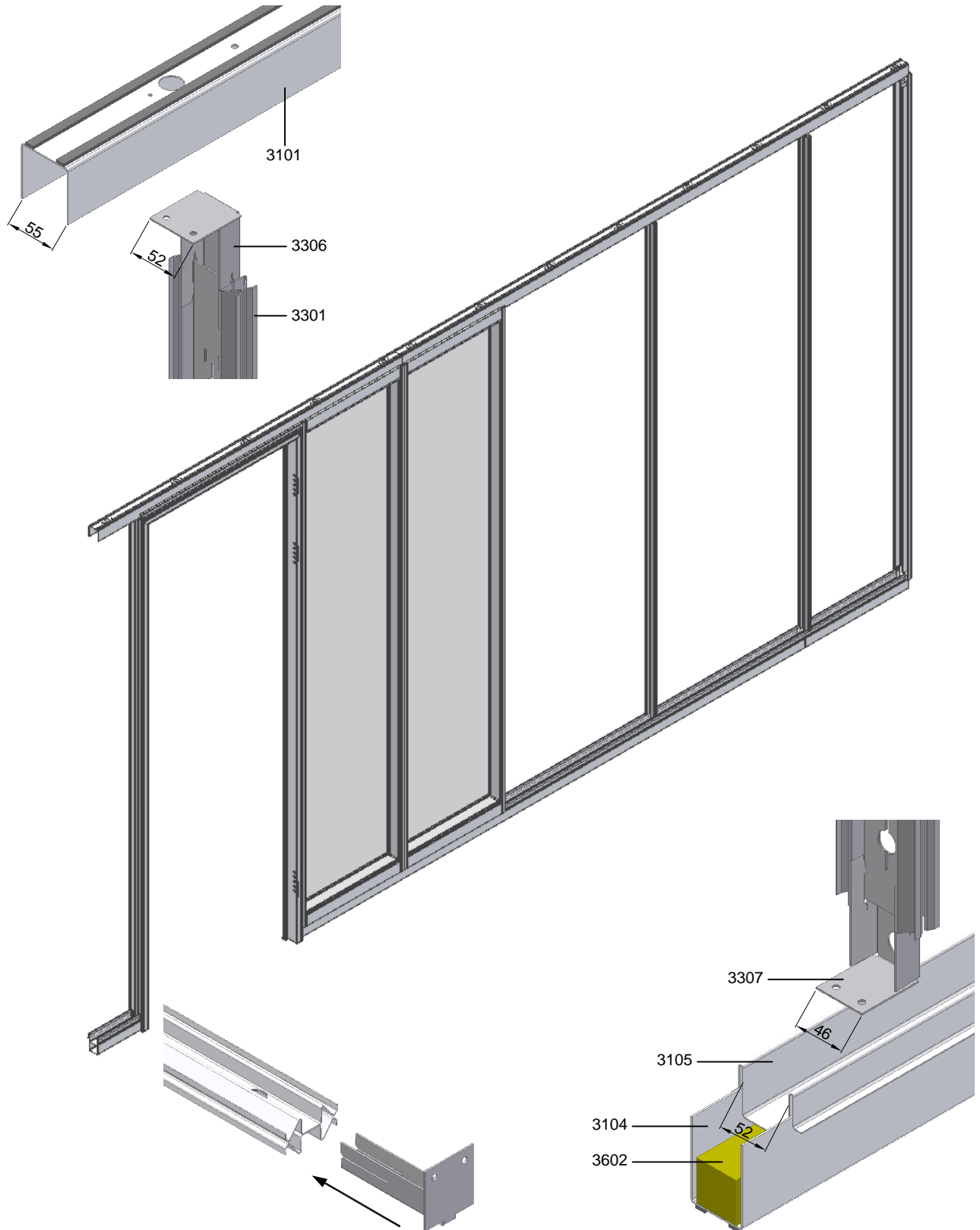
design the way you think

01-12-2007 - version 1

4-1-05

www.maarsgroup.com
Maars Partitioning Systems BV

Mounting of the clamping studs
Einbau der Klemmstütze
Montage des montants
Montage van de klemstijlen
Montar pie de tabique



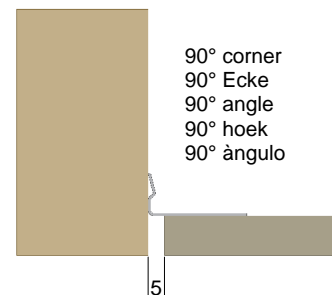
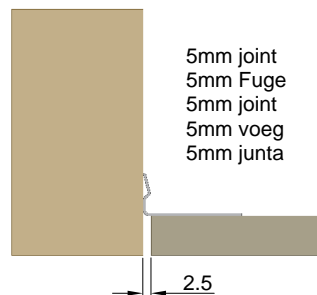
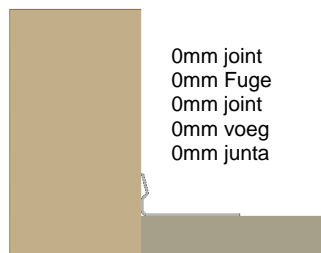
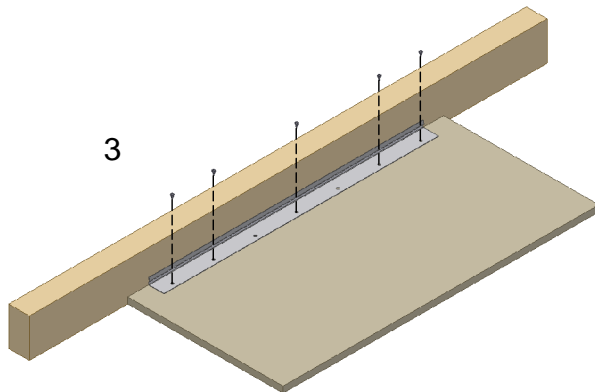
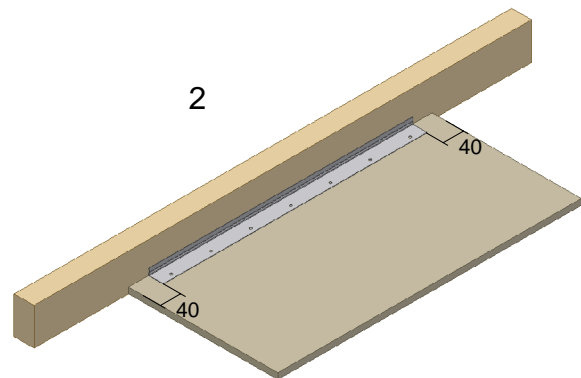
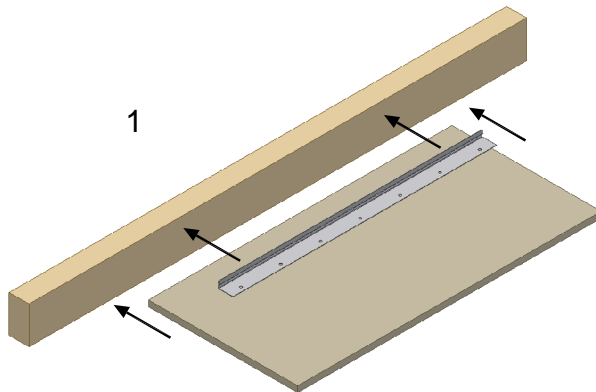
design the way you think

01-12-2007 - version 1

4-1-06

www.maarsgroup.com
Maars Partitioning Systems BV

Mounting of the clampingstrip
 Einbau der Klemmstrip
 Montage des profil de serrage
 Montage van de klemstrip
 Montar ...



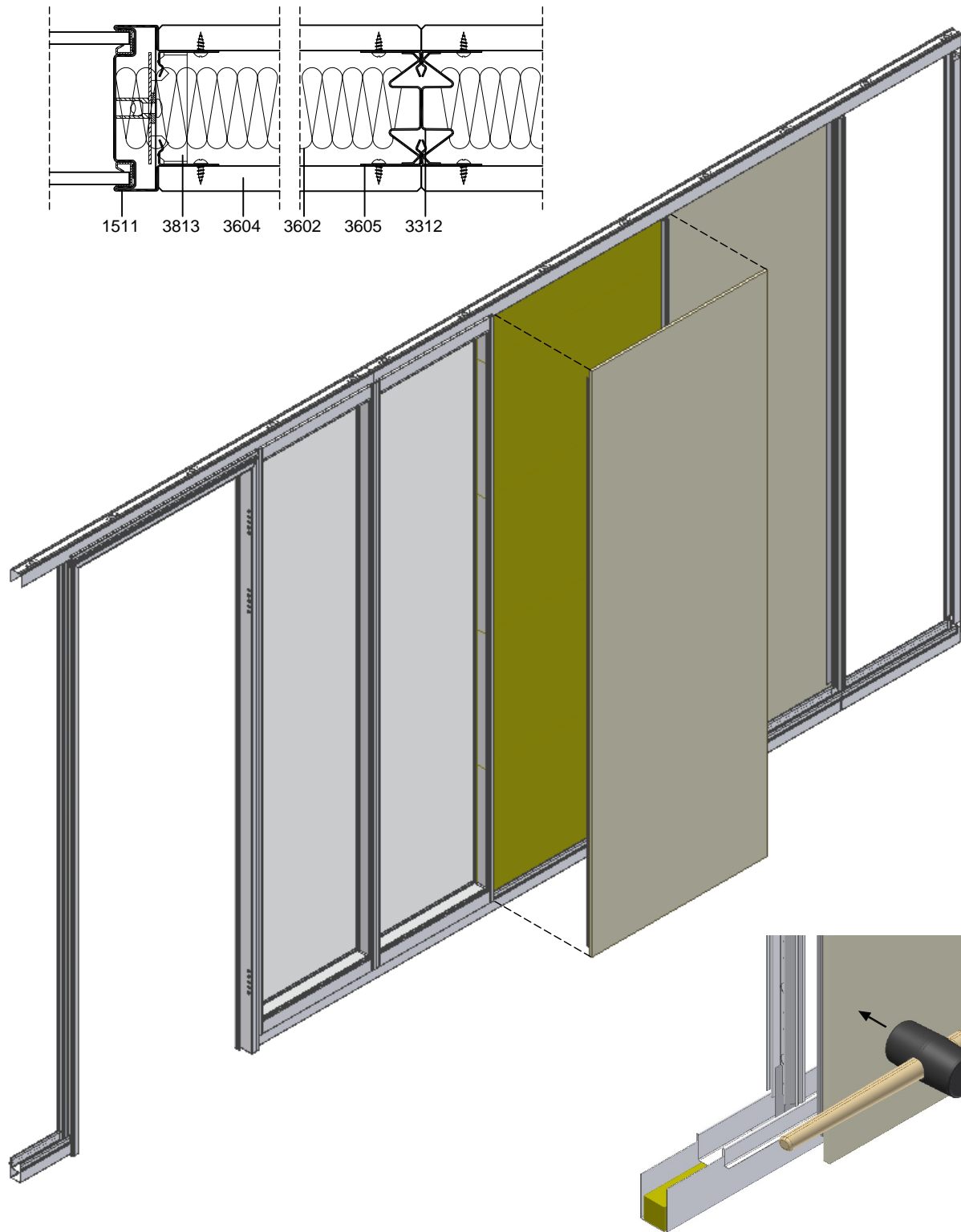
design the way you think

01-12-2007 - version 1

4-1-07

www.maarsgroup.com
 Maars Partitioning Systems BV

Mounting melamin panel
Einbau Melamin Paneele
Montage panneau melaminé
Montage melamine paneel
Montar paneles madera



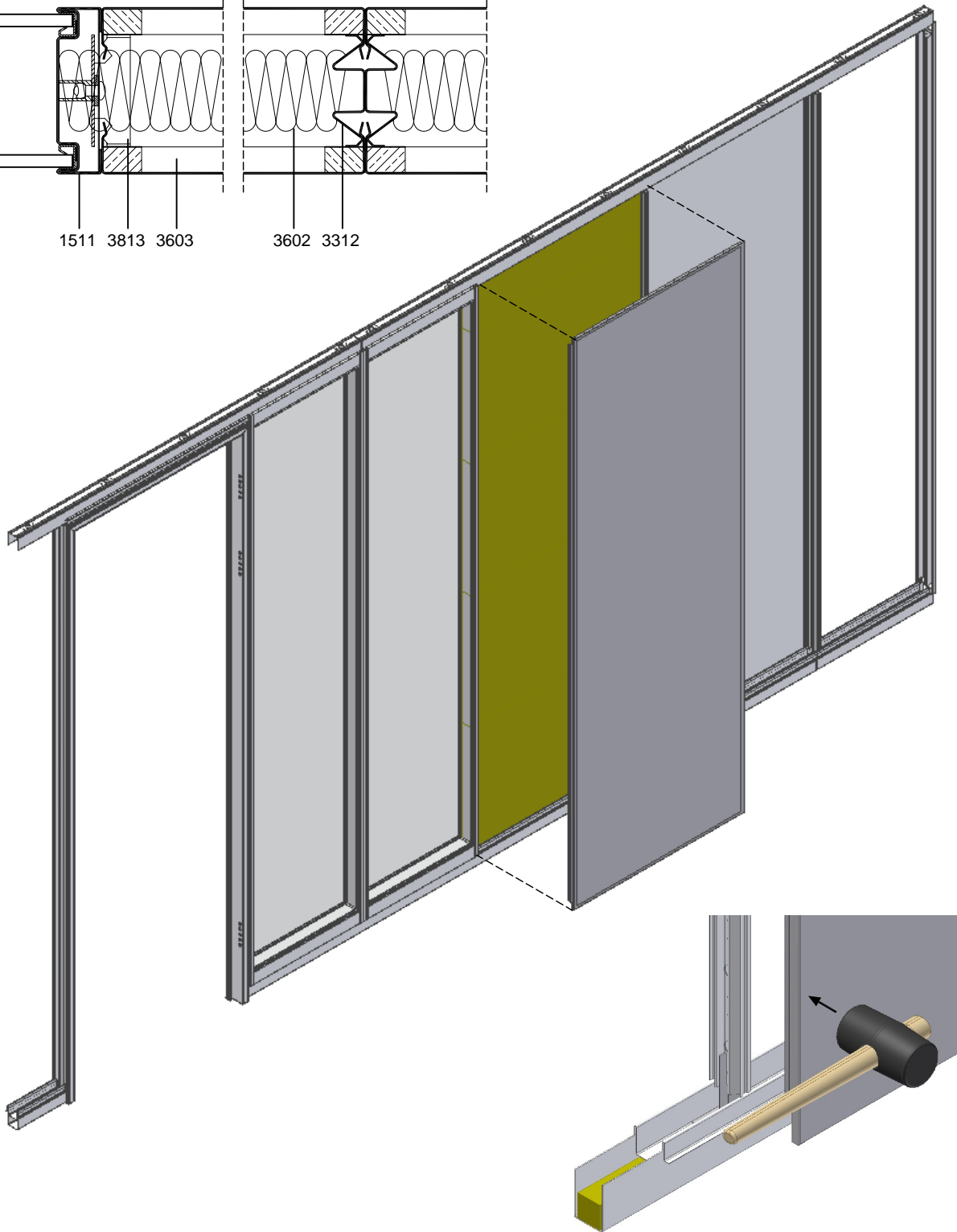
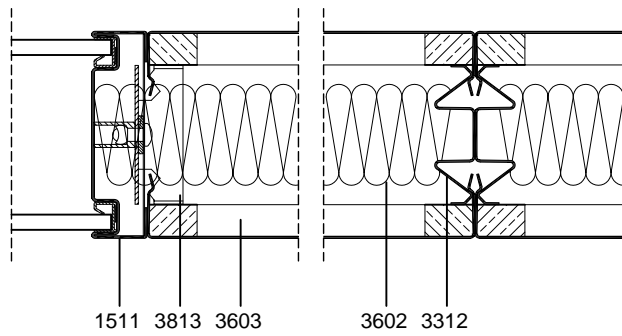
design the way you think

01-12-2007 - version 1

4-1-08

www.maarsgroup.com
Maars Partitioning Systems BV

Mounting steel panel
Einbau Stahl Paneele
Montage panneau acier
Montage staal paneel
Montar paneles acero



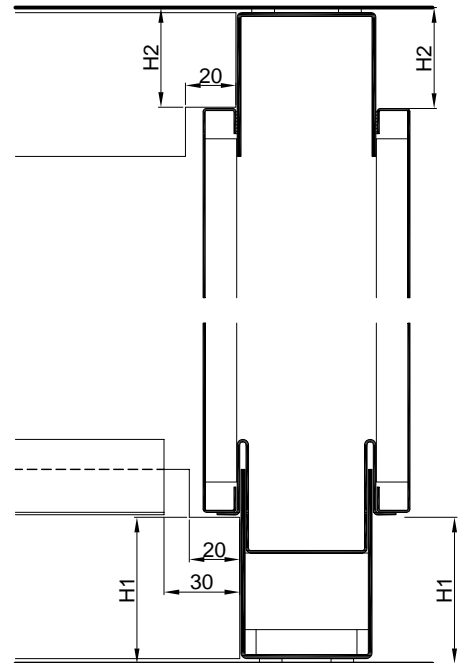
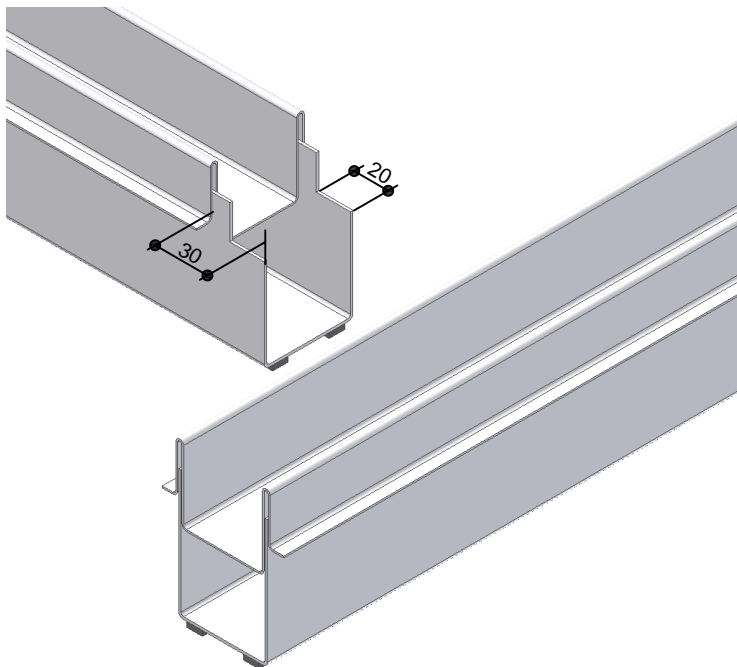
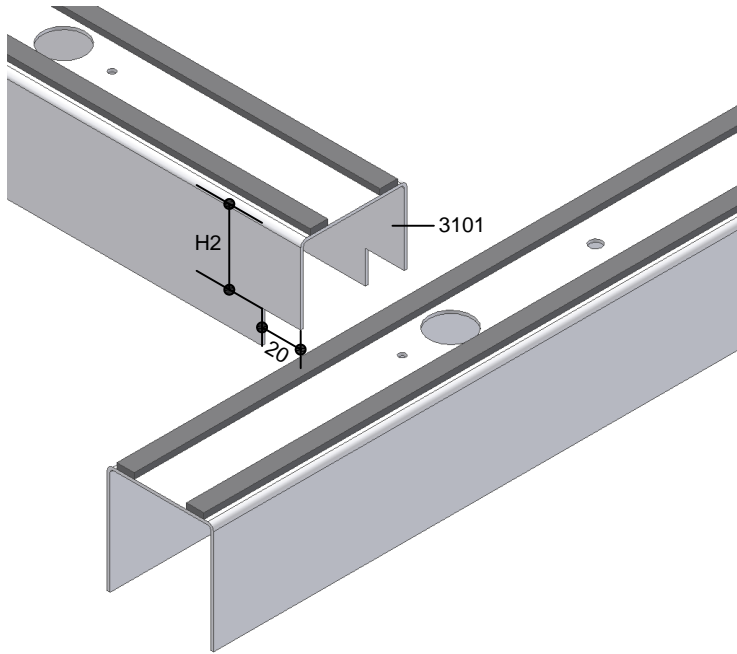
design the way you think

01-12-2007 - version 1

4-1-09

www.maarsgroup.com
Maars Partitioning Systems BV

T-joint ceiling- / floor track
T-anschluss Decken- / Sockelprofil
Raccordement en T lisse haute et lisse basse
T-aansluiting plafond- vloerprofiel
T-conexión rodetecho / rodapie



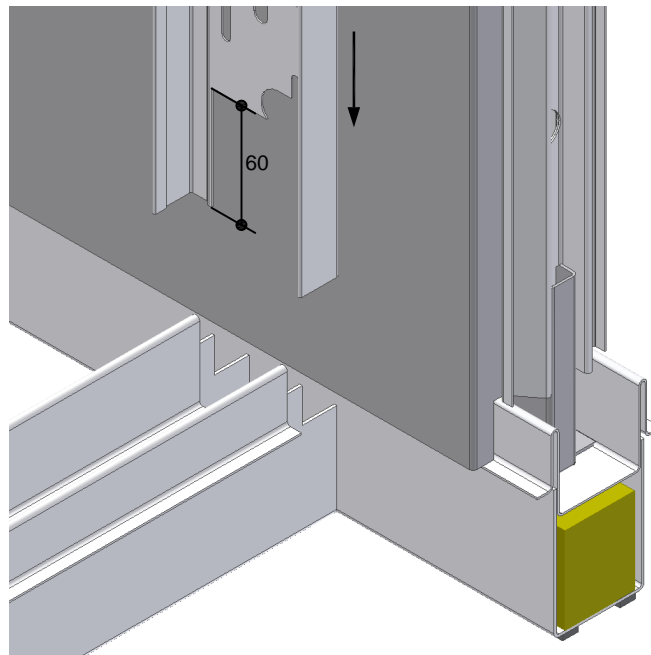
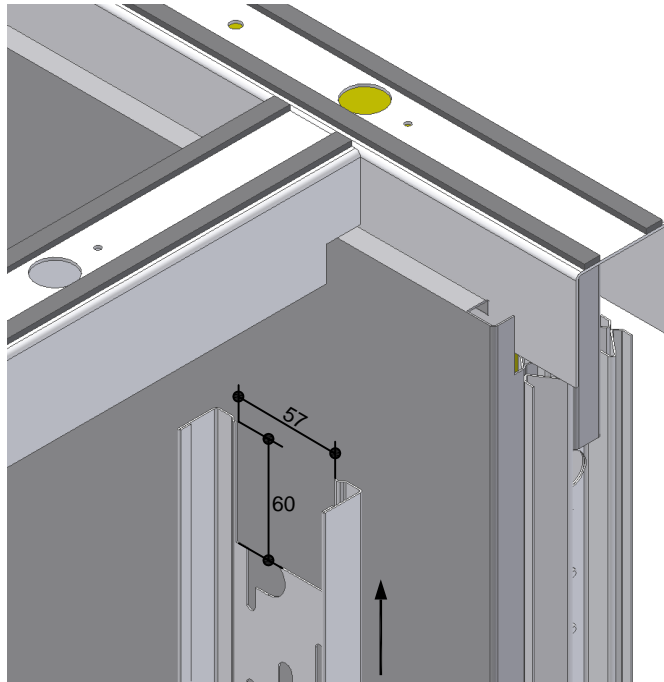
design the way you think

01-12-2007 - version 1

4-1-10

www.maarsgroup.com
Maars Partitioning Systems BV

T-joint ceiling- / floor track
T-anschluss Decken- / Sockelprofil
Raccordement en T lisse haute et lisse basse
T-aansluiting plafond- vloerprofiel
T-conexión rodatecho / rodapie



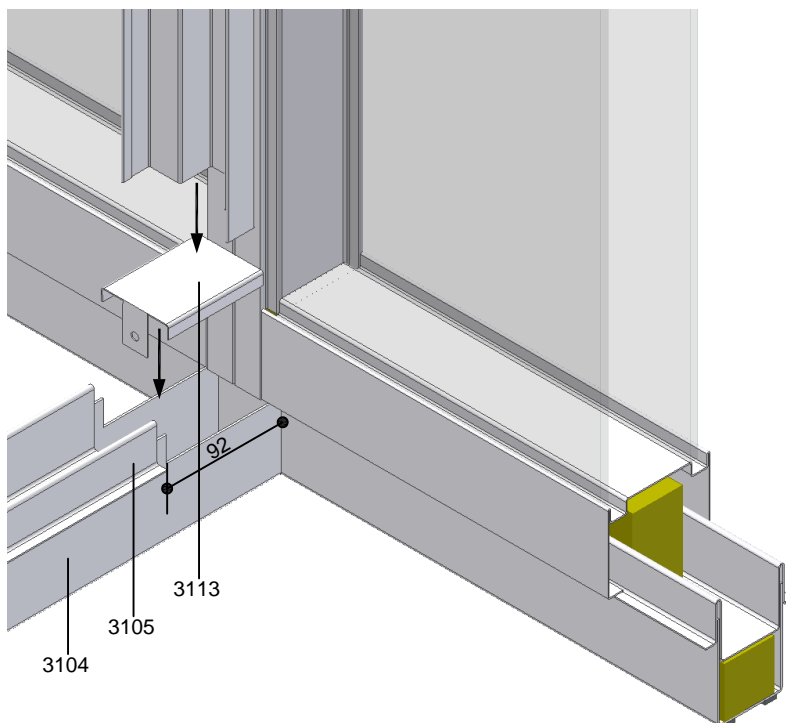
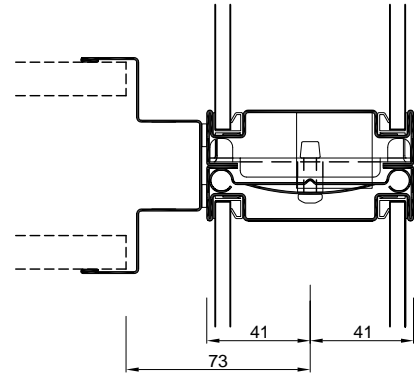
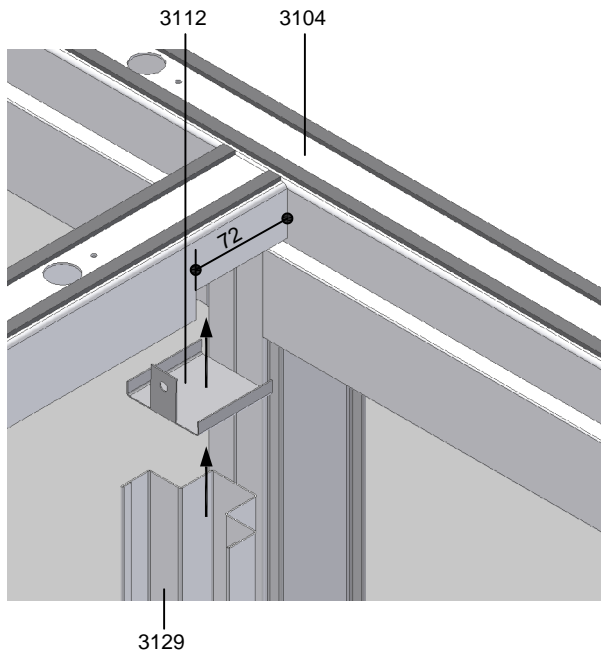
design the way you think

01-12-2007 - version 1

4-1-11

www.maarsgroup.com
Maars Partitioning Systems BV

T-joint ceiling- / floor track
T-anschluss Decken- / Sockelprofil
Raccordement en T lisse haute et lisse basse
T-aansluiting plafond- vloerprofiel
T-conexión rodatecho / rodapie



design the way you think

01-12-2007 - version 1

4-1-12

www.maarsgroup.com
Maars Partitioning Systems BV